



AUTOMATIC SWING DOOR OPENER M-FORCE™ WITH SWING-GUARD

4.24- FULL ENERGY OPERATOR, ON HM/WOOD DOOR & FRAME

- **4.24.01 - FE OPERATOR, HMW FRAME, VISIBLE, RH-IN**
- **4.24.02 - FE OPERATOR, HMW FRAME, VISIBLE, LH-IN**
- **4.24.03 - FE OPERATOR, HMW FRAME, VISIBLE, RH-OUT**
- **4.24.04 - FE OPERATOR, HMW FRAME, VISIBLE, LH-OUT**
- **4.24.05 - FE OPERATOR, HMW FRAME, VISIBLE, PAIR IN**
- **4.24.06 - FE OPERATOR, HMW FRAME, VISIBLE, PAIR OUT**
- **4.24.07 - FE OPERATOR, HMW FRAME, VISIBLE, PAIR DE**

STANLEY
Access Technologies

M-FORCE™
(NEXT GENERATION MAGIC-FORCE™)
WITH
SWING-GUARD®

FULL ENERGY OPERATOR ON H.M./WOOD DOOR & FRAME

PROJECT INFORMATION

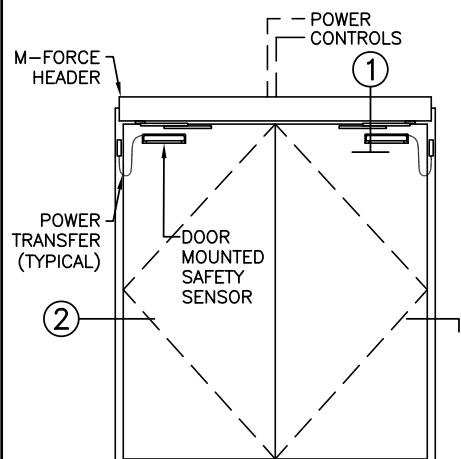
PROJECT NAME:

LOCATION:

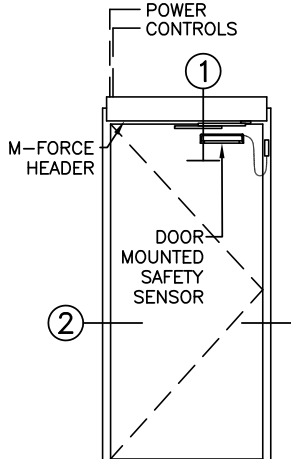
DOOR NUMBER(S):

DATE:

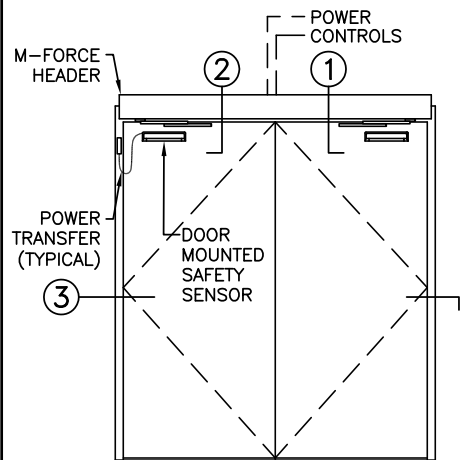
SHEET: OF



PAIR VISIBLE



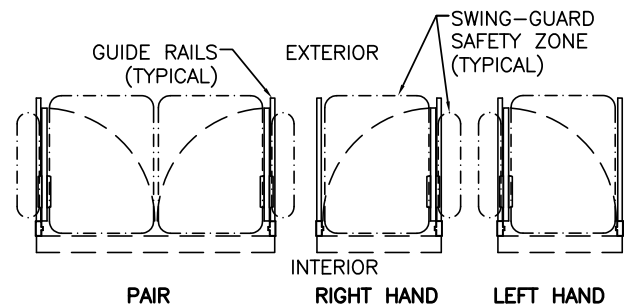
SINGLE VISIBLE



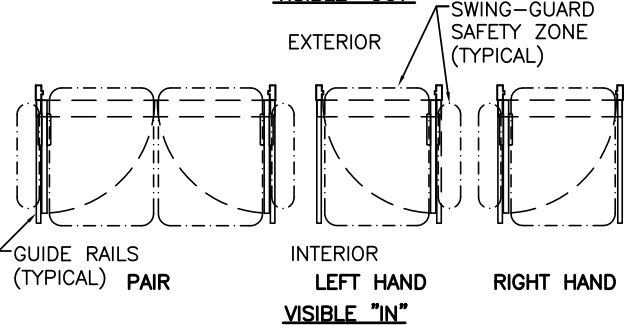
DOUBLE EGRESS

ELEVATIONS

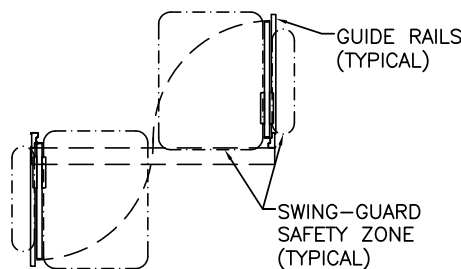
SCALE: 1/4" = 1'-0"



VISIBLE "OUT"



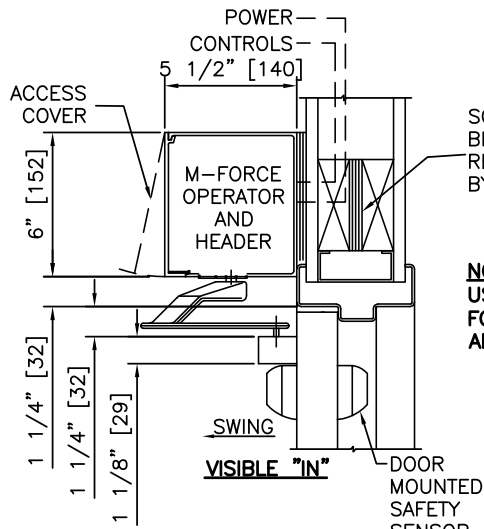
VISIBLE "IN"



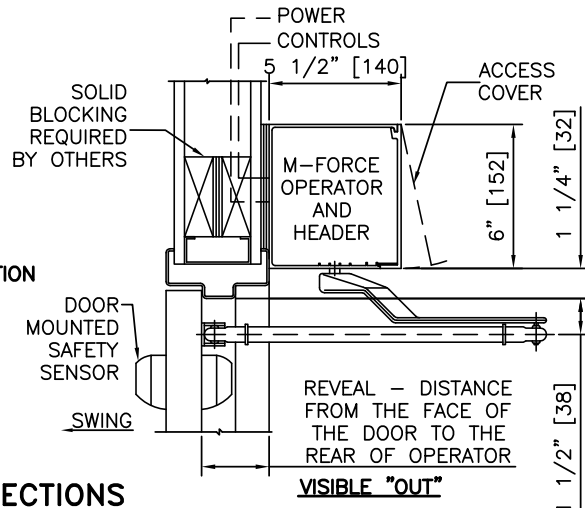
PAIR DOUBLE EGRESS

PLAN VIEWS

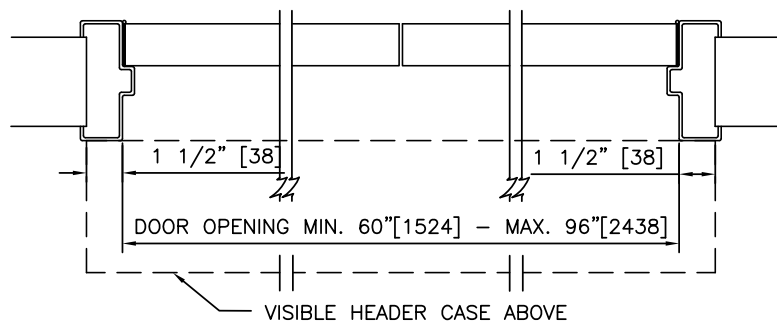
SCALE: 3/16" = 1'-0"



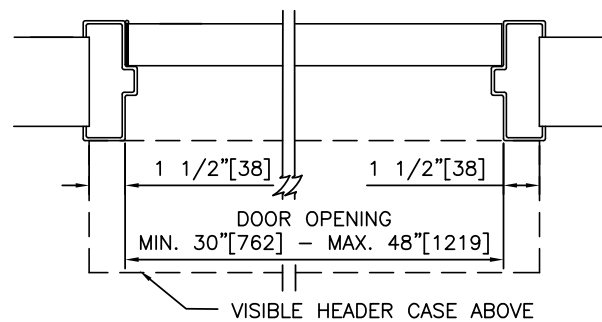
NOTE:
USE "IN" HEADER POSITION
FOR DOUBLE-EGRESS
APPLICATIONS



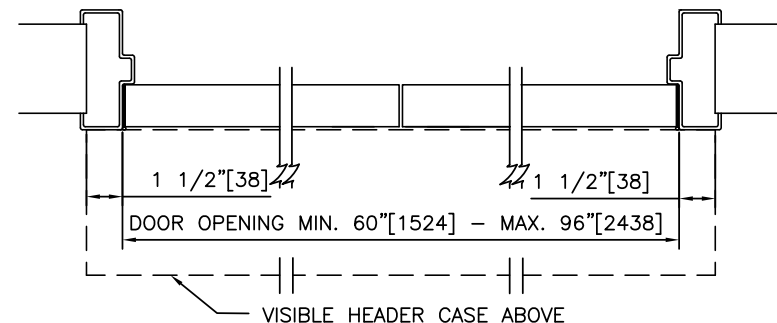
1 VERTICAL SECTIONS
SCALE: 1 1/2" = 1'-0"



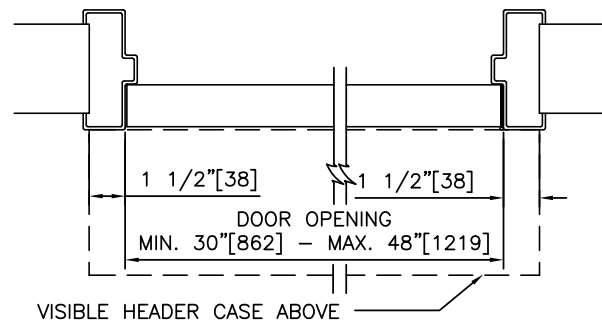
PAIR VISIBLE "OUT"



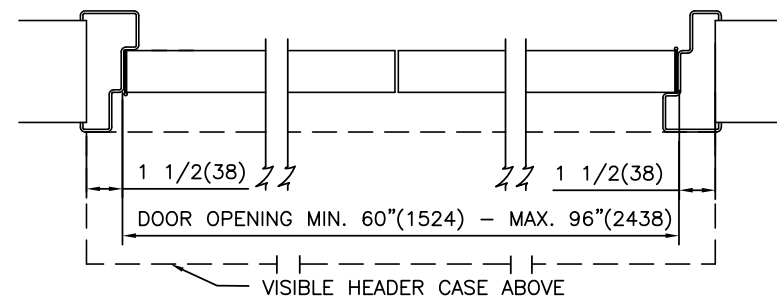
SINGLE VISIBLE LH "OUT"



PAIR VISIBLE "IN"



SINGLE VISIBLE LH "IN"



DOUBLE EGRESS

2 HORIZONTAL SECTIONS
SCALE: 1 1/2" = 1'-0"

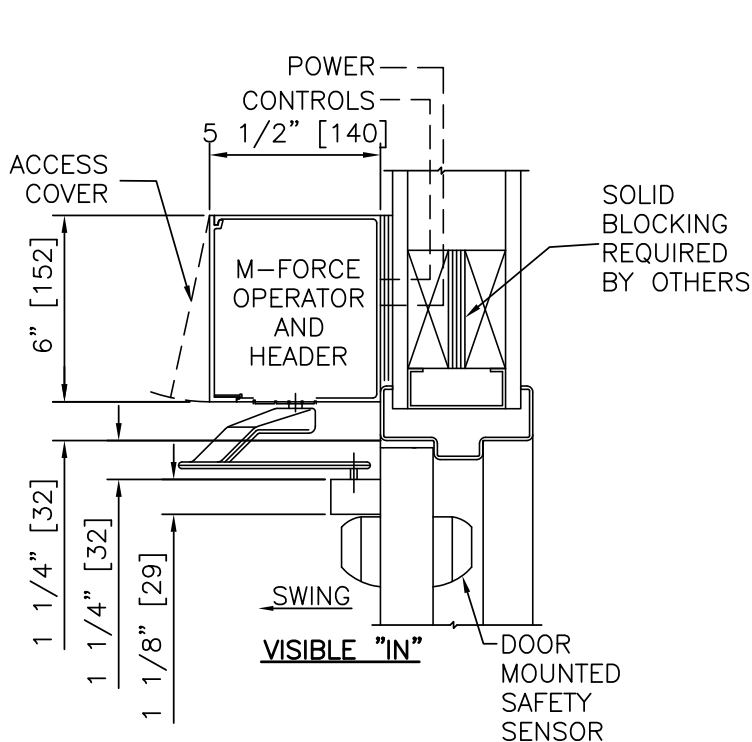
NOTES

- ELECTRICAL REQUIREMENTS: BY ELECTRICAL CONTRACTOR
 - 120 VAC, 5 AMP MIN TO OPERATOR.
 - CONTROL CIRCUIT FROM ACTIVATION TO OPERATOR.
- DOORS, FRAMES, AND HARDWARE BY OTHERS.
- DOORS MUST BE UN-LATCHED FOR PROPER OPERATION. PROVIDE TIME DELAY RELAY WHEN REQUIRED FOR PROPER OPERATION.
- LIMITS OF ACTIVATION AND SAFETY ZONES ARE PROVIDED FOR REFERENCE ONLY; SEE ANSI/BHMA A156.10 FOR SPECIFIC REQUIREMENTS.
- OPERATOR AND INSTALLATION TO COMPLY WITH ANSI/BHMA A156.10.
- SEE SPECIFICATIONS FOR ADDITIONAL INFORMATION.

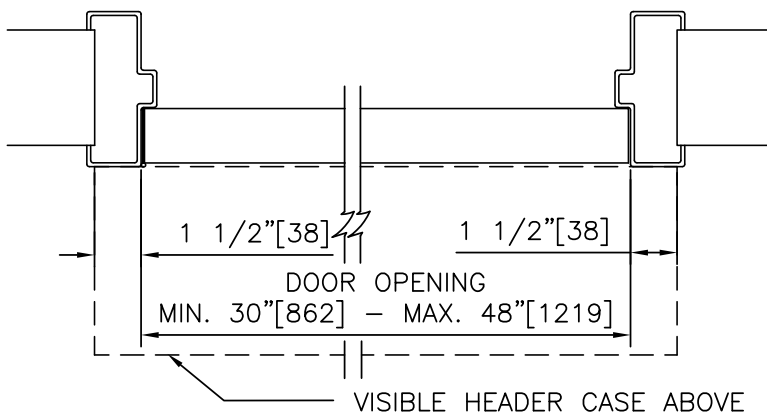
FULL ENERGY OPERATOR ON H.M./WOOD DOOR & FRAME

M-FORCE™
(NEXT GENERATION MAGIC-FORCE™)
WITH
SWING-GUARD®

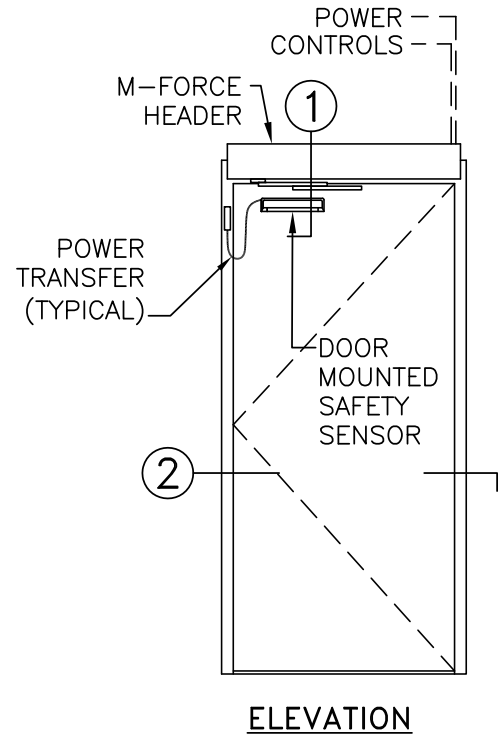
STANLEY
Access Technologies



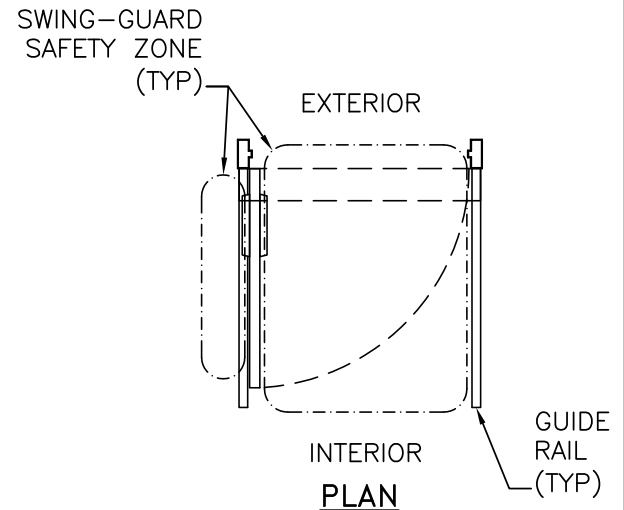
① **VERTICAL SECTION**



② **HORIZONTAL SECTION**



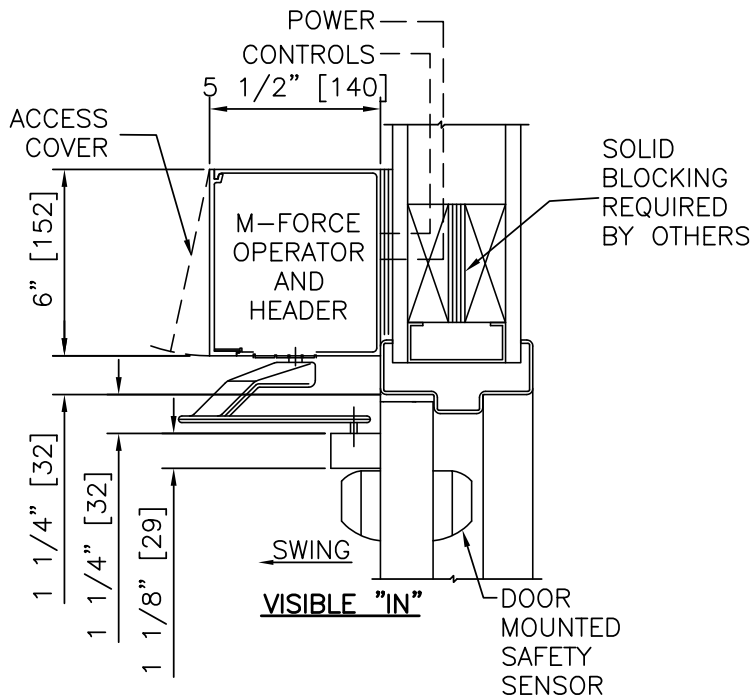
ELEVATION



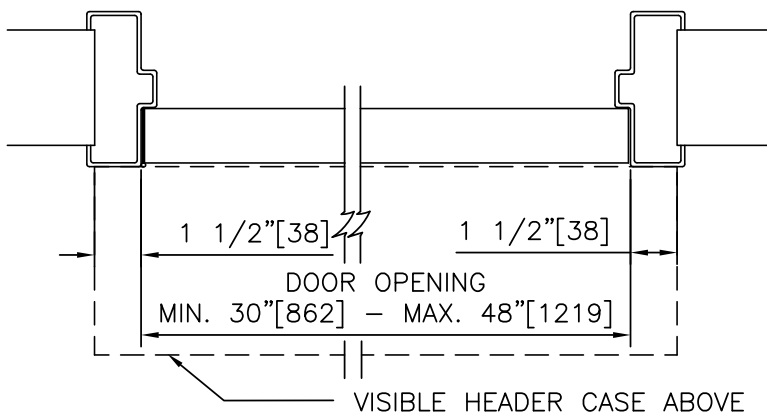
PLAN

NOTES:

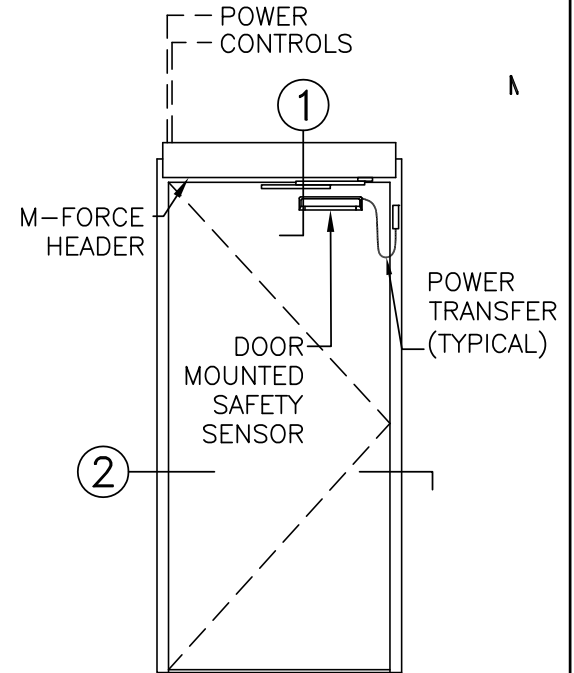
1. DETAILS NOT TO SCALE.
2. ELECTRICAL REQUIREMENTS: BY ELECTRICAL CONTRACTOR
 - 2.1. 120 VAC, 5 AMP MIN TO OPERATOR.
 - 2.2. CONTROL CIRCUIT FROM ACTIVATION TO OPERATOR.
3. DOORS, FRAMES, AND HARDWARE BY OTHERS.
4. DOORS MUST BE UN-LATCHED FOR PROPER OPERATION. PROVIDE TIME DELAY RELAY WHEN REQUIRED FOR PROPER OPERATION.
5. LIMITS OF ACTIVATION AND SAFETY ZONES ARE PROVIDED FOR REFERENCE ONLY; SEE ANSI/BHMA A156.10 FOR SPECIFIC REQUIREMENTS.
6. OPERATOR AND INSTALLATION TO COMPLY WITH ANSI/BHMA A156.10.
7. SEE SPECIFICATIONS FOR ADDITIONAL INFORMATION.



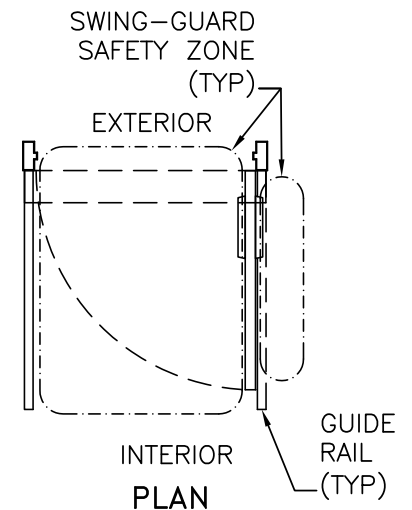
① VERTICAL SECTION



② HORIZONTAL SECTION



ELEVATION



INTERIOR PLAN

NOTES:

1. DETAILS NOT TO SCALE.
2. ELECTRICAL REQUIREMENTS: BY ELECTRICAL CONTRACTOR
 - 2.1. 120 VAC, 5 AMP MIN TO OPERATOR.
 - 2.2. CONTROL CIRCUIT FROM ACTIVATION TO OPERATOR.
3. DOORS, FRAMES, AND HARDWARE BY OTHERS.
4. DOORS MUST BE UN-LATCHED FOR PROPER OPERATION. PROVIDE TIME DELAY RELAY WHEN REQUIRED FOR PROPER OPERATION.
5. LIMITS OF ACTIVATION AND SAFETY ZONES ARE PROVIDED FOR REFERENCE ONLY; SEE ANSI/BHMA A156.10 FOR SPECIFIC REQUIREMENTS.
6. OPERATOR AND INSTALLATION TO COMPLY WITH ANSI/BHMA A156.10.
7. SEE SPECIFICATIONS FOR ADDITIONAL INFORMATION.

M-FORCE™
(NEXT GENERATION MAGIC-FORCE™)
WITH
SWING-GUARD®

FULL ENERGY OPERATOR, HMW FRAME, VISIBLE, RIGHT HAND OUT

PROJECT INFORMATION

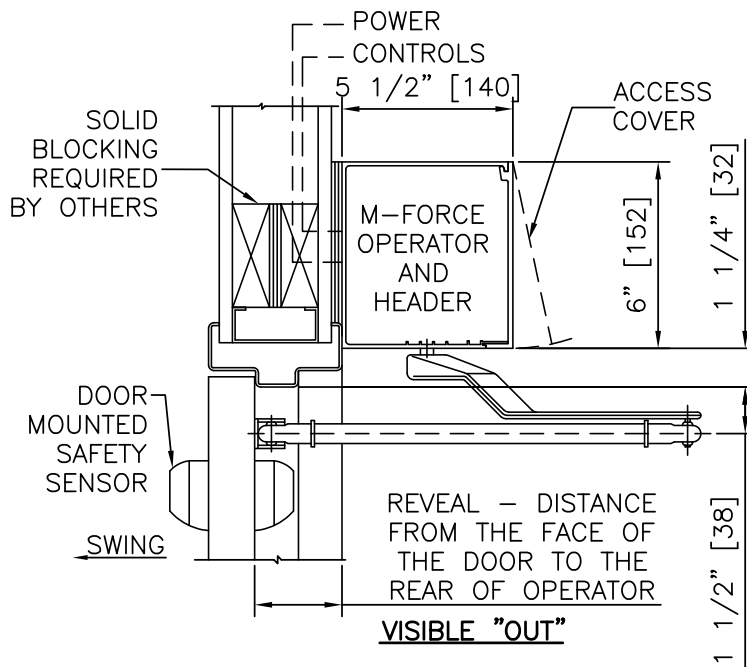
PROJECT NAME:

LOCATION:

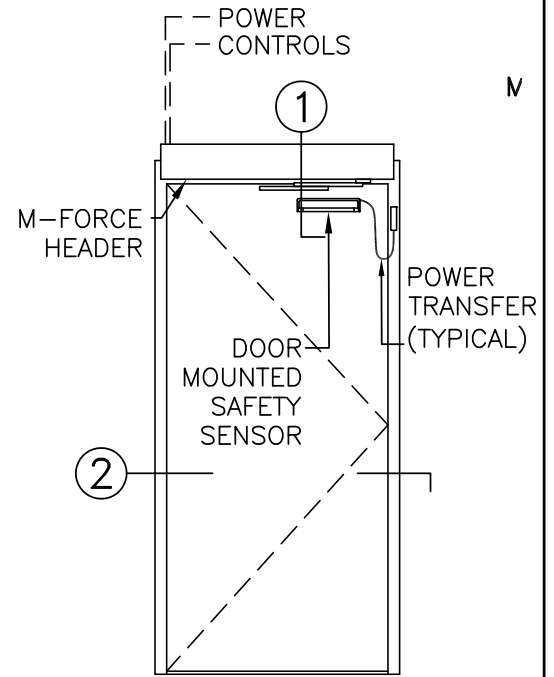
DOOR NUMBER(S):

DATE:

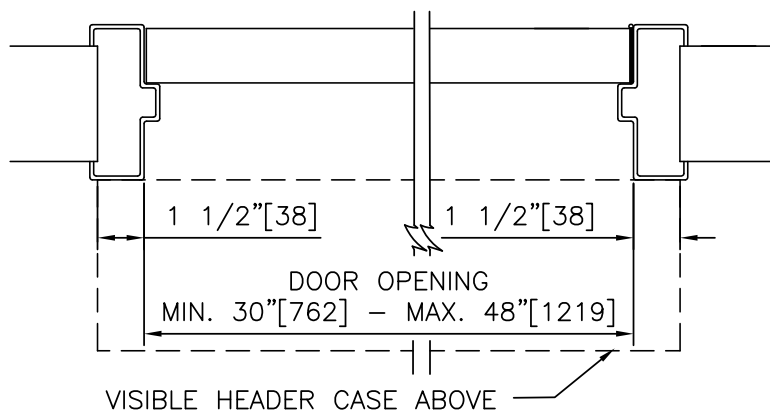
SHEET: OF



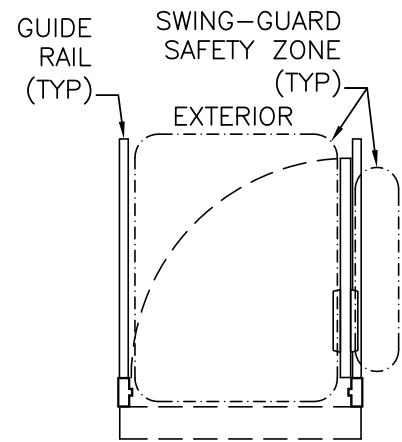
① VERTICAL SECTION



ELEVATION



② HORIZONTAL SECTION



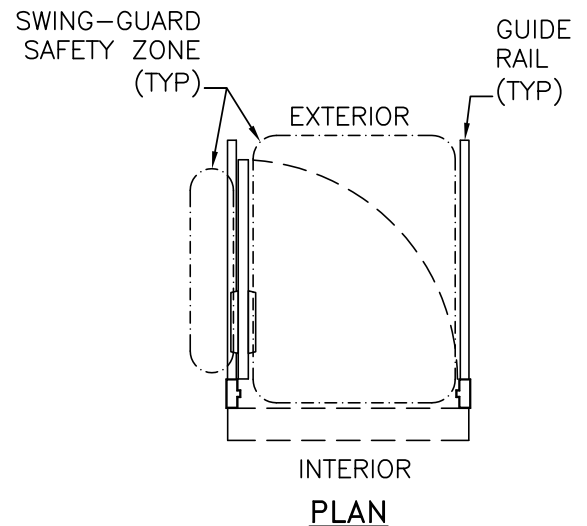
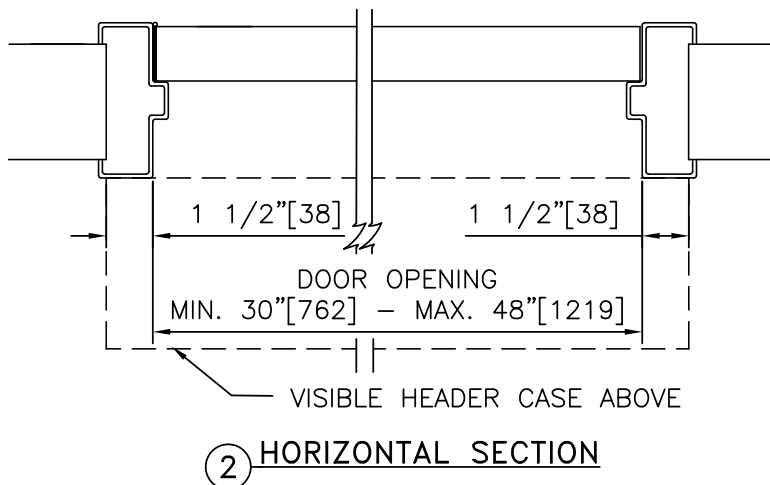
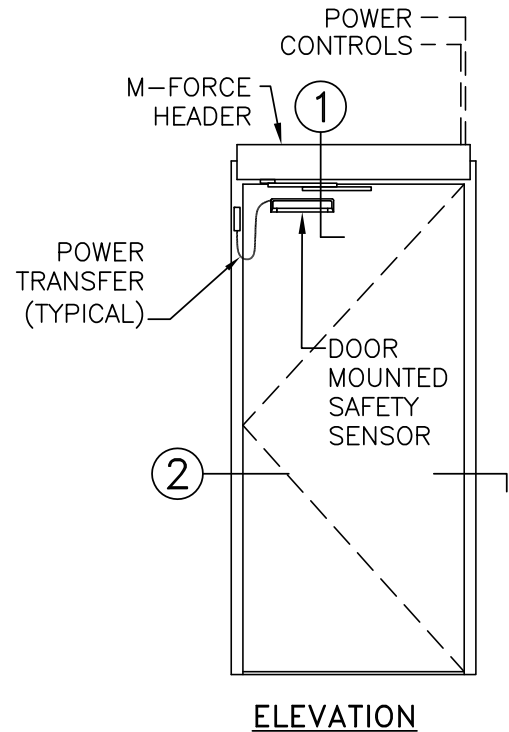
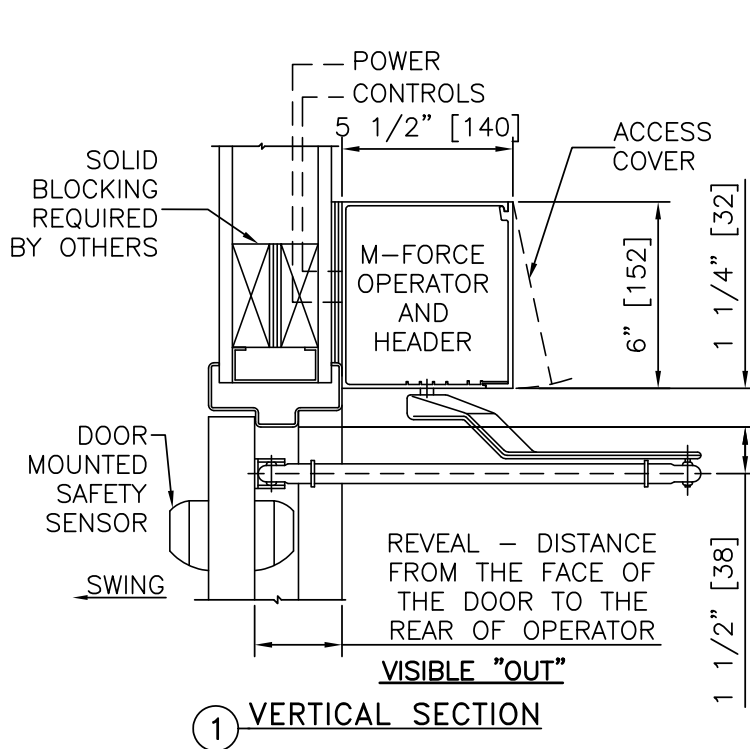
INTERIOR
PLAN

NOTES:

1. DETAILS NOT TO SCALE.
2. ELECTRICAL REQUIREMENTS: BY ELECTRICAL CONTRACTOR
 - 2.1. 120 VAC, 5 AMP MIN TO OPERATOR.
 - 2.2. CONTROL CIRCUIT FROM ACTIVATION TO OPERATOR.
3. DOORS, FRAMES, AND HARDWARE BY OTHERS.
4. DOORS MUST BE UN-LATCHED FOR PROPER OPERATION. PROVIDE TIME DELAY RELAY WHEN REQUIRED FOR PROPER OPERATION.
5. LIMITS OF ACTIVATION AND SAFETY ZONES ARE PROVIDED FOR REFERENCE ONLY; SEE ANSI/BHMA A156.10 FOR SPECIFIC REQUIREMENTS.
6. OPERATOR AND INSTALLATION TO COMPLY WITH ANSI/BHMA A156.10.
7. SEE SPECIFICATIONS FOR ADDITIONAL INFORMATION.

M-FORCE™
(NEXT GENERATION MAGIC-FORCE™)
WITH
SWING-GUARD®

FULL ENERGY OPERATOR, HMW FRAME, VISIBLE, LEFT HAND OUT	
PROJECT INFORMATION	
PROJECT NAME:	
LOCATION:	
DOOR NUMBER(S):	
DATE:	SHEET: OF



NOTES:

1. DETAILS NOT TO SCALE.
2. ELECTRICAL REQUIREMENTS: BY ELECTRICAL CONTRACTOR
 - 2.1. 120 VAC, 5 AMP MIN TO OPERATOR.
 - 2.2. CONTROL CIRCUIT FROM ACTIVATION TO OPERATOR.
3. DOORS, FRAMES, AND HARDWARE BY OTHERS.
4. DOORS MUST BE UN-LATCHED FOR PROPER OPERATION. PROVIDE TIME DELAY RELAY WHEN REQUIRED FOR PROPER OPERATION.
5. LIMITS OF ACTIVATION AND SAFETY ZONES ARE PROVIDED FOR REFERENCE ONLY; SEE ANSI/BHMA A156.10 FOR SPECIFIC REQUIREMENTS.
6. OPERATOR AND INSTALLATION TO COMPLY WITH ANSI/BHMA A156.10.
7. SEE SPECIFICATIONS FOR ADDITIONAL INFORMATION.

M-FORCE™
(NEXT GENERATION MAGIC-FORCE™)
WITH
SWING-GUARD®

FULL ENERGY OPERATOR, HMW FRAME, VISIBLE, PAIR IN

PROJECT INFORMATION

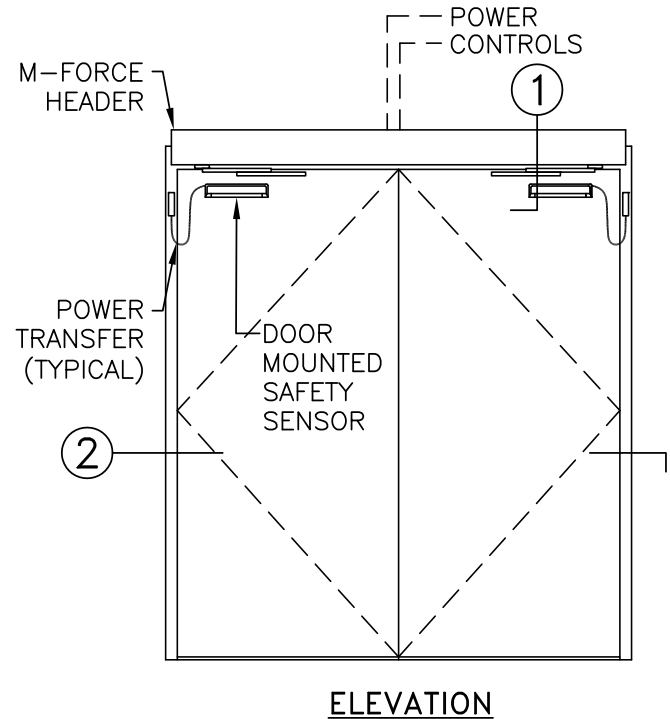
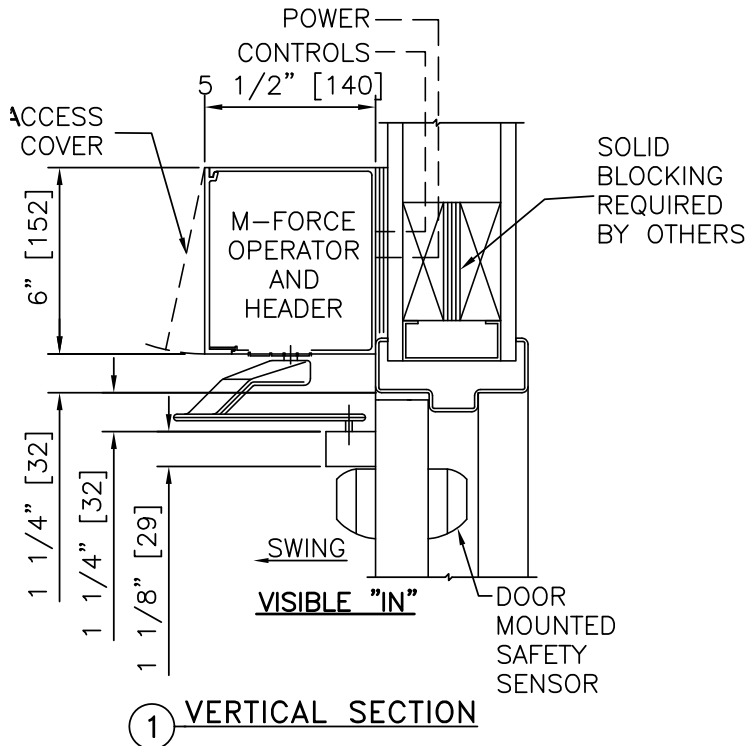
PROJECT NAME:

LOCATION:

DOOR NUMBER(S):

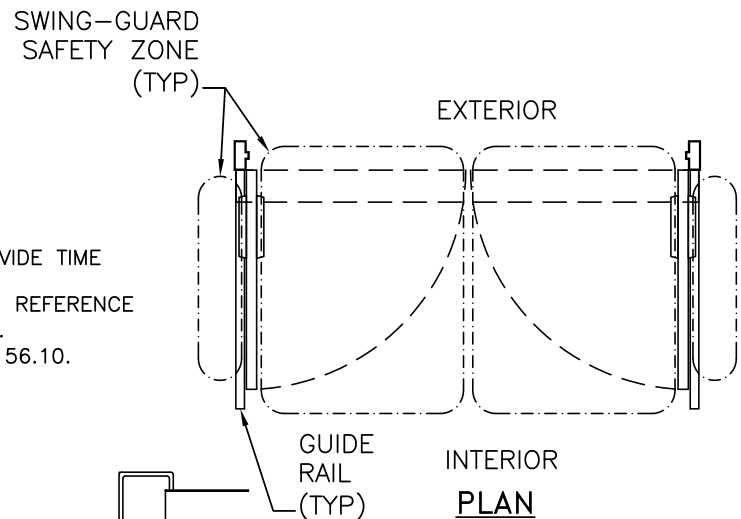
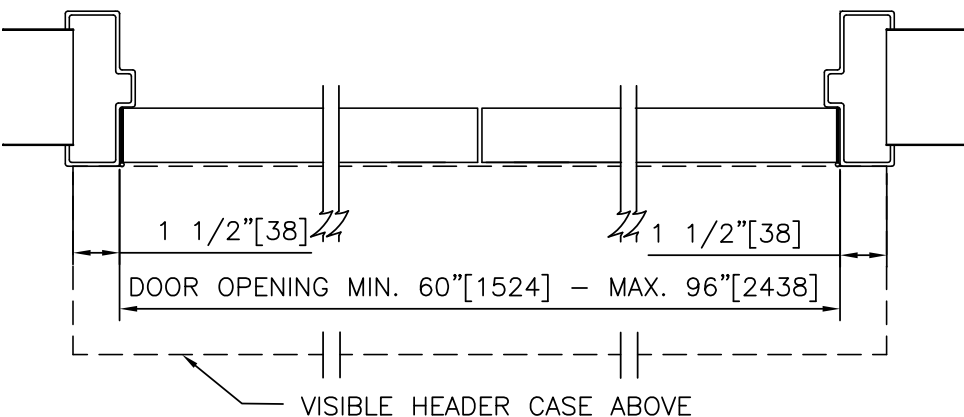
DATE:

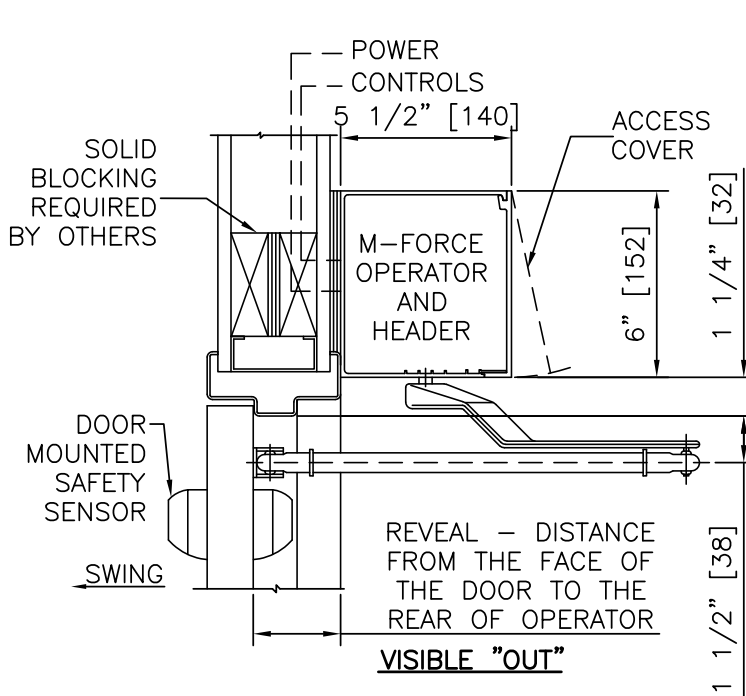
SHEET: OF



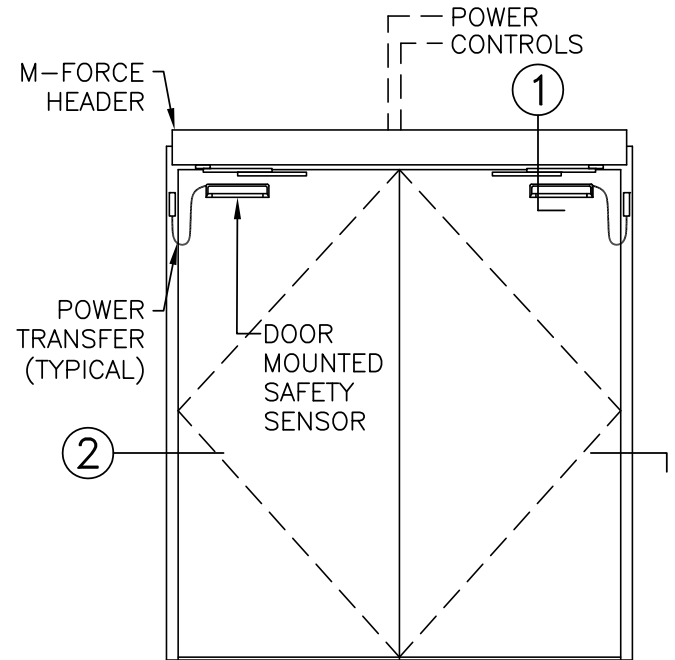
NOTES:

1. DETAILS NOT TO SCALE.
2. ELECTRICAL REQUIREMENTS: BY ELECTRICAL CONTRACTOR
 - 2.1. 120 VAC, 5 AMP MIN TO OPERATOR.
 - 2.2. CONTROL CIRCUIT FROM ACTIVATION TO OPERATOR.
3. DOORS, FRAMES, AND HARDWARE BY OTHERS.
4. DOORS MUST BE UN-LATCHED FOR PROPER OPERATION. PROVIDE TIME DELAY RELAY WHEN REQUIRED FOR PROPER OPERATION.
5. LIMITS OF ACTIVATION AND SAFETY ZONES ARE PROVIDED FOR REFERENCE ONLY; SEE ANSI/BHMA A156.10 FOR SPECIFIC REQUIREMENTS.
6. OPERATOR AND INSTALLATION TO COMPLY WITH ANSI/BHMA A156.10.
7. SEE SPECIFICATIONS FOR ADDITIONAL INFORMATION.





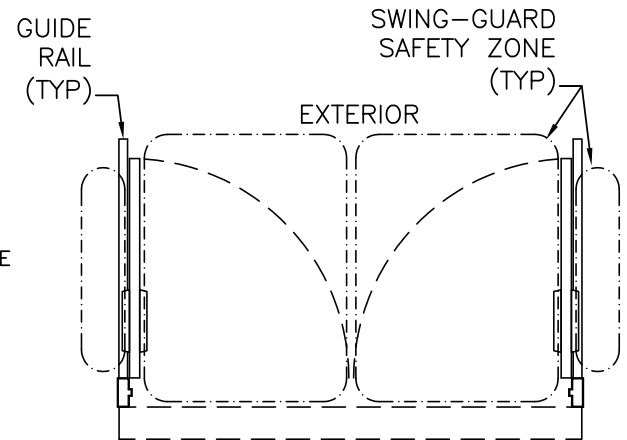
1 VERTICAL SECTION



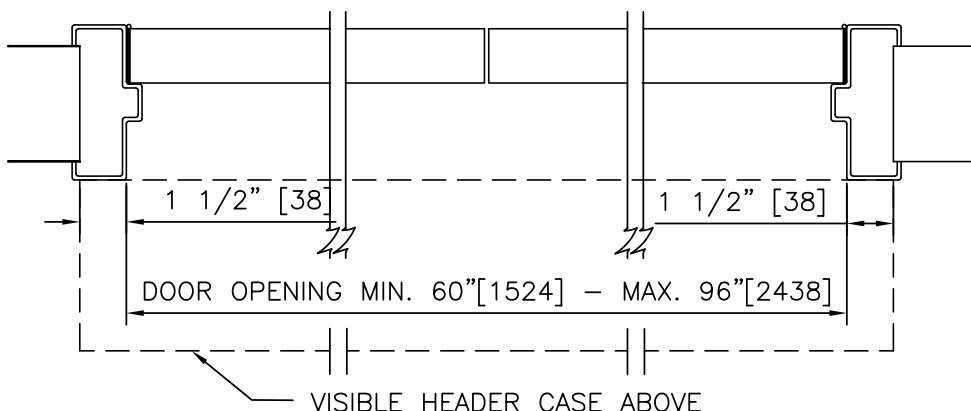
ELEVATION

NOTES:

1. DETAILS NOT TO SCALE.
2. ELECTRICAL REQUIREMENTS: BY ELECTRICAL CONTRACTOR
 - 2.1. 120 VAC, 5 AMP MIN TO OPERATOR.
 - 2.2. CONTROL CIRCUIT FROM ACTIVATION TO OPERATOR.
3. DOORS, FRAMES, AND HARDWARE BY OTHERS.
4. DOORS MUST BE UN-LATCHED FOR PROPER OPERATION. PROVIDE TIME DELAY RELAY WHEN REQUIRED FOR PROPER OPERATION.
5. LIMITS OF ACTIVATION AND SAFETY ZONES ARE PROVIDED FOR REFERENCE ONLY; SEE ANSI/BHMA A156.10 FOR SPECIFIC REQUIREMENTS.
6. OPERATOR AND INSTALLATION TO COMPLY WITH ANSI/BHMA A156.10.
7. SEE SPECIFICATIONS FOR ADDITIONAL INFORMATION.



INTERIOR
PLAN



2 HORIZONTAL SECTION

M-FORCE™
(NEXT GENERATION MAGIC-FORCE™)
WITH
SWING-GUARD®

FULL ENERGY OPERATOR, HMW FRAME, VISIBLE, PAIR DE

PROJECT INFORMATION

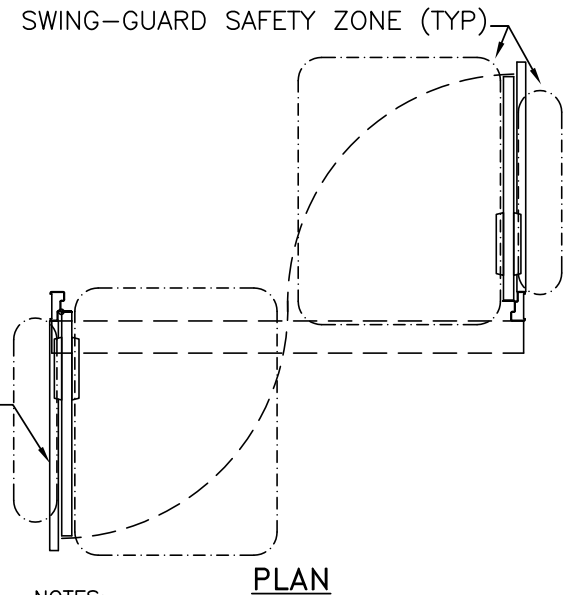
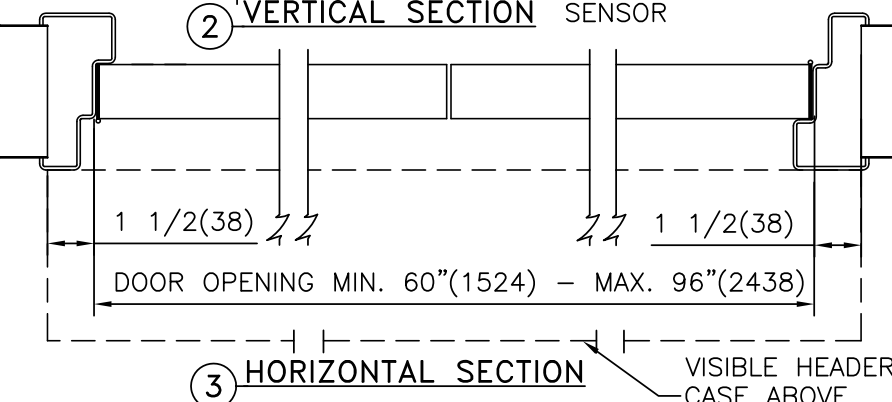
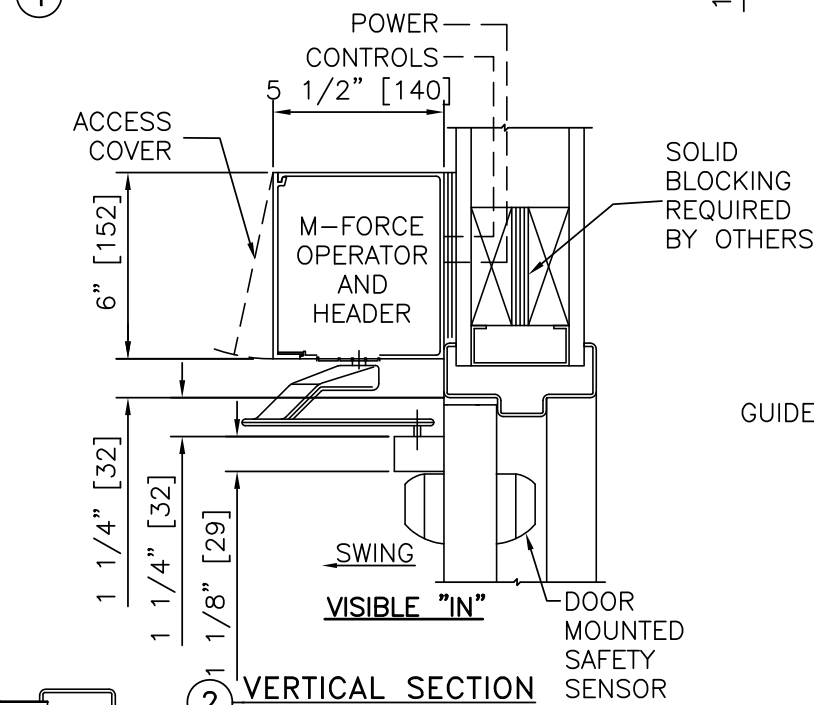
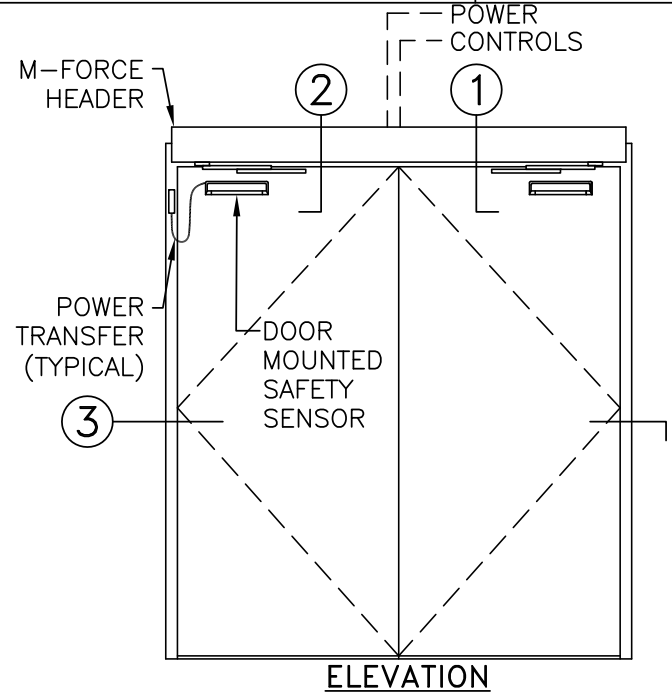
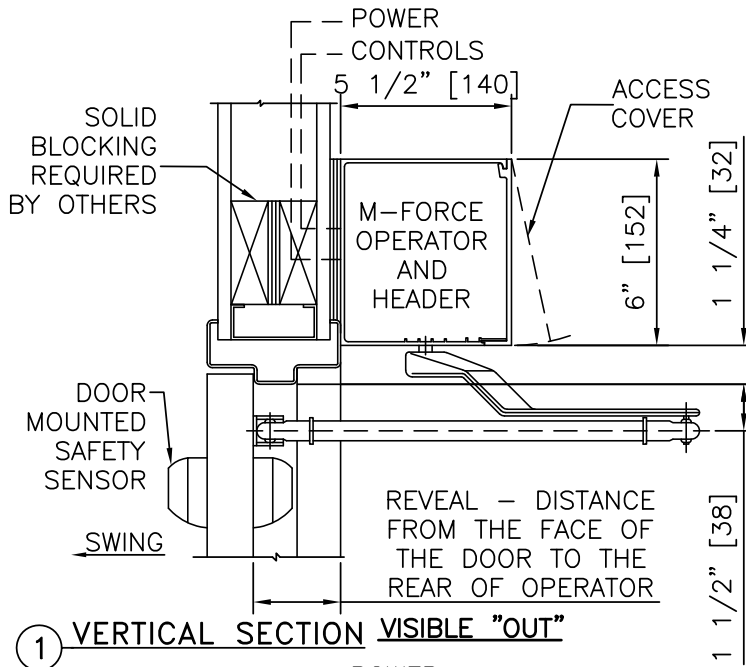
PROJECT NAME:

LOCATION:

DOOR NUMBER(S):

DATE:

SHEET: OF



NOTES:

1. DETAILS NOT TO SCALE.
2. ELECTRICAL REQUIREMENTS: BY ELECTRICAL CONTRACTOR
 - 2.1. 120 VAC, 5 AMP MIN TO OPERATOR.
 - 2.2. CONTROL CIRCUIT FROM ACTIVATION TO OPERATOR.
3. DOORS, FRAMES, AND HARDWARE BY OTHERS. DOORS MUST BE UN-LATCHED FOR PROPER OPERATION. PROVIDE TIME DELAY RELAY WHEN REQUIRED FOR PROPER OPERATION.
4. LIMITS OF ACTIVATION AND SAFETY ZONES ARE PROVIDED FOR REFERENCE ONLY; SEE ANSI/BHMA A156.10 FOR SPECIFIC REQUIREMENTS.
5. OPERATOR AND INSTALLATION TO COMPLY WITH ANSI/BHMA A156.10.
6. SEE SPECIFICATIONS FOR ADDITIONAL INFORMATION.