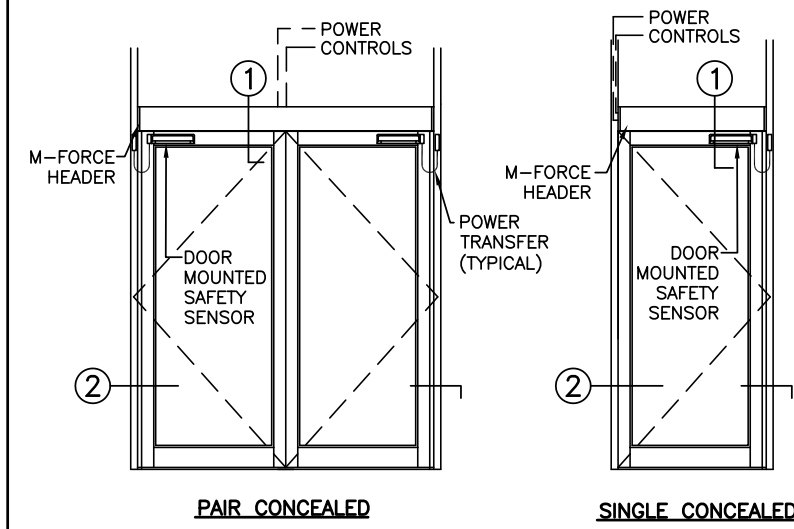
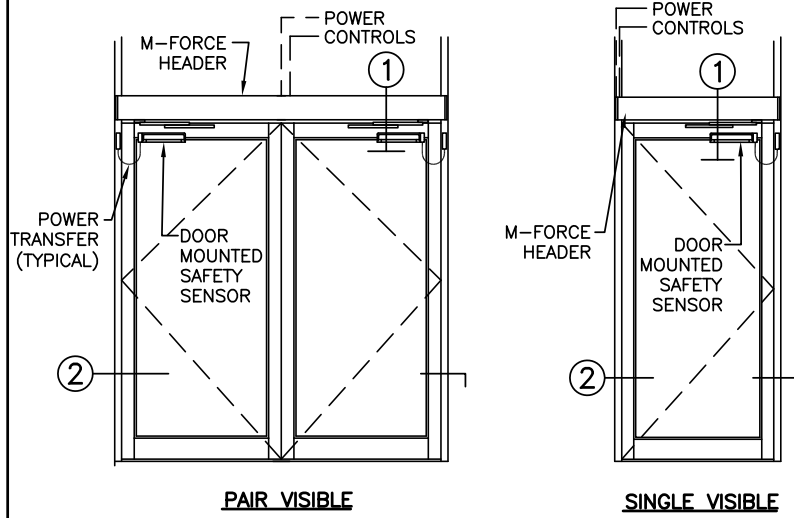


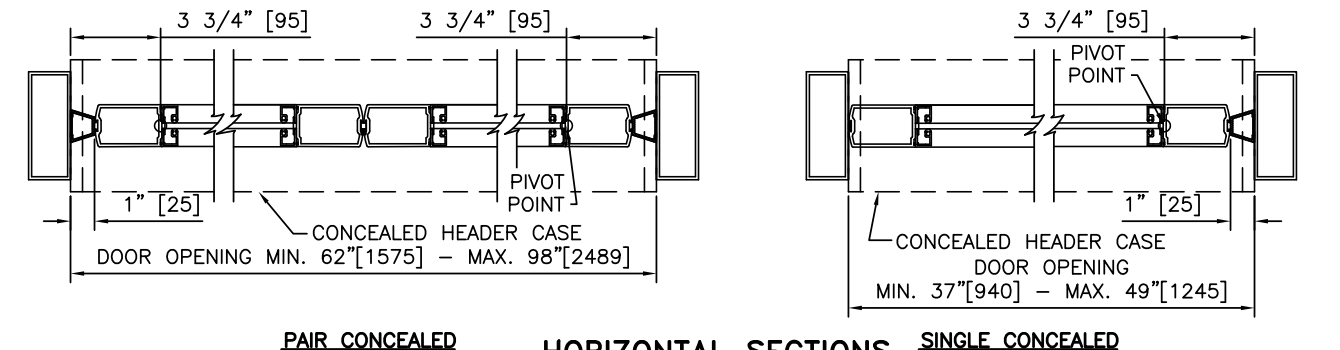
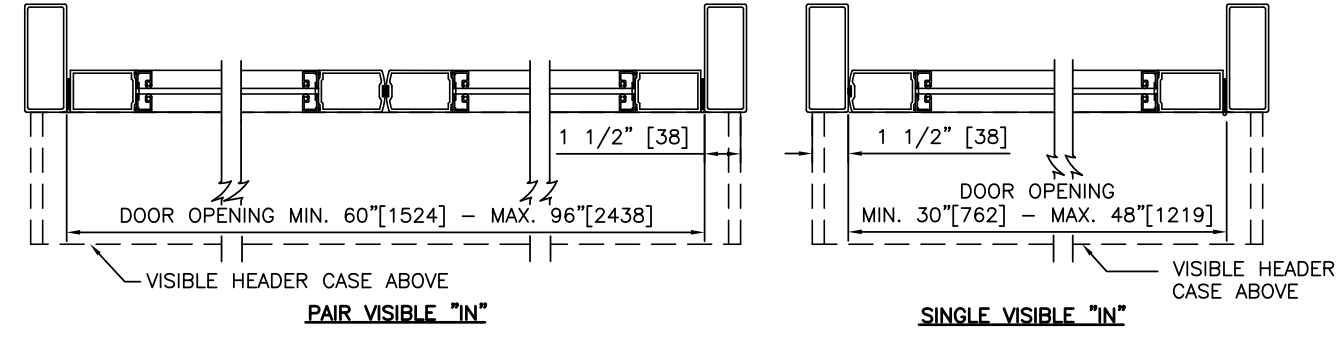
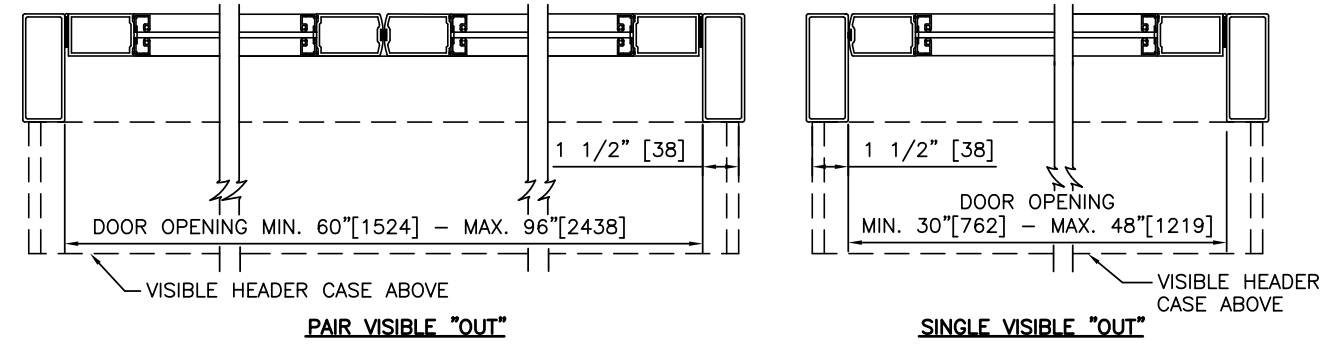
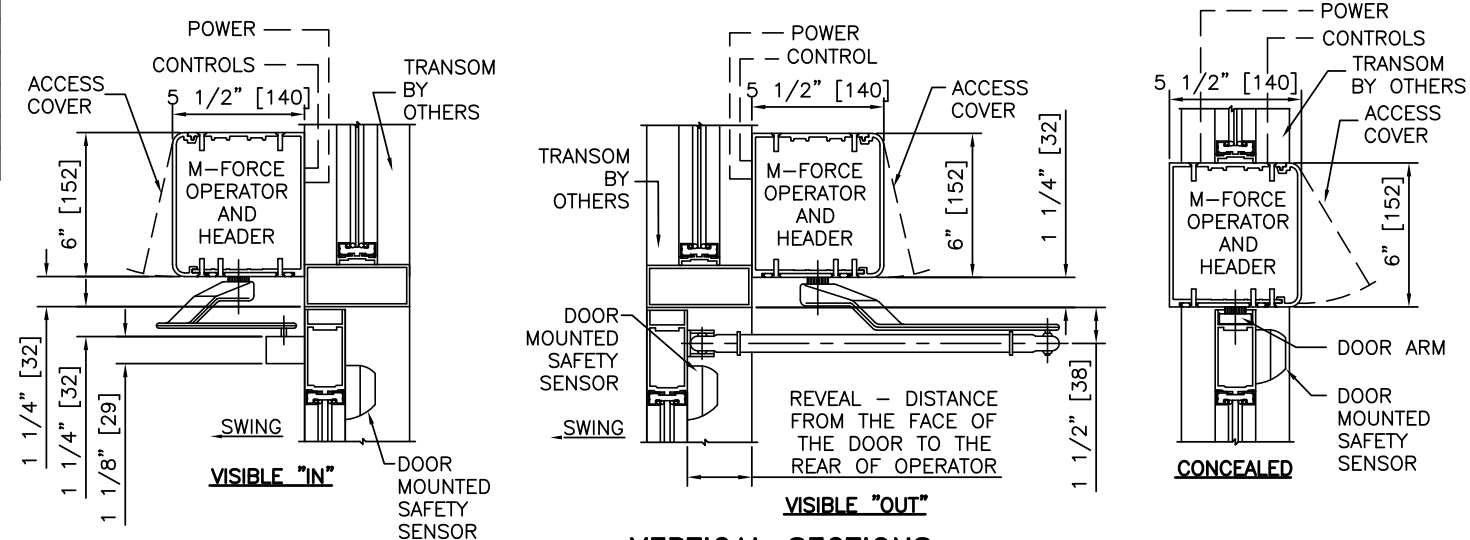
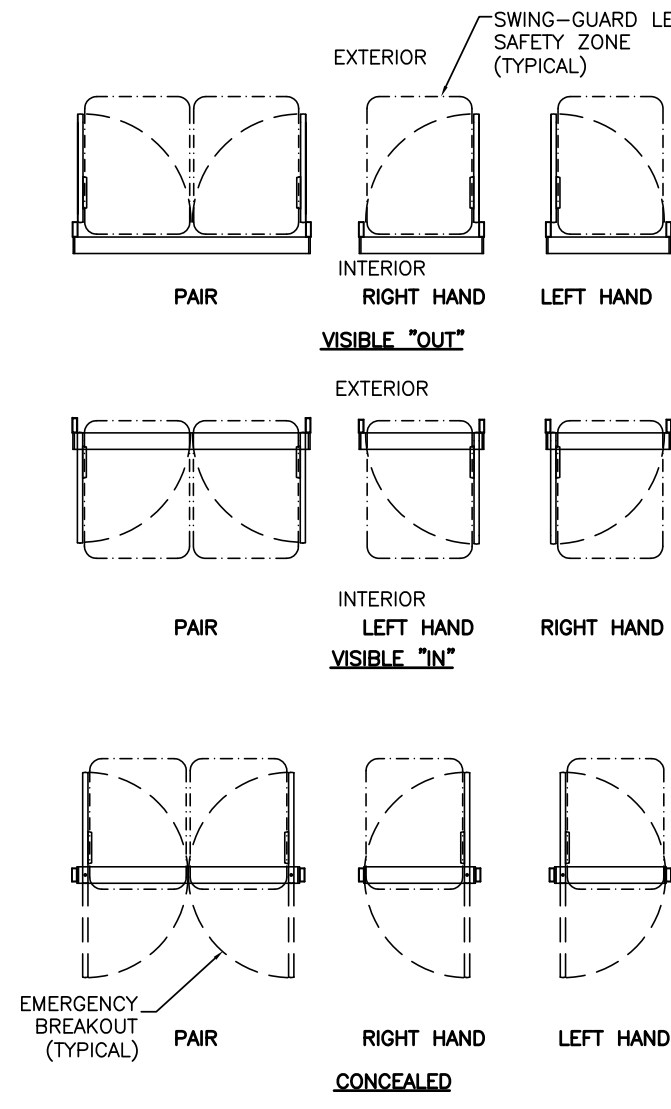
**STANLEY**  
Access Technologies

**M-FORCE™**  
(NEXT GENERATION MAGIC-FORCE™)  
**WITH**  
**SWING-GUARD® LE**

LOW ENERGY OPERATOR ON ALUMINUM DOOR & FRAME	
PROJECT INFORMATION	
PROJECT NAME:	
LOCATION:	
DOOR NUMBER(S):	
DATE:	SHEET: OF



**ELEVATIONS**  
SCALE: 1/4" = 1'-0"



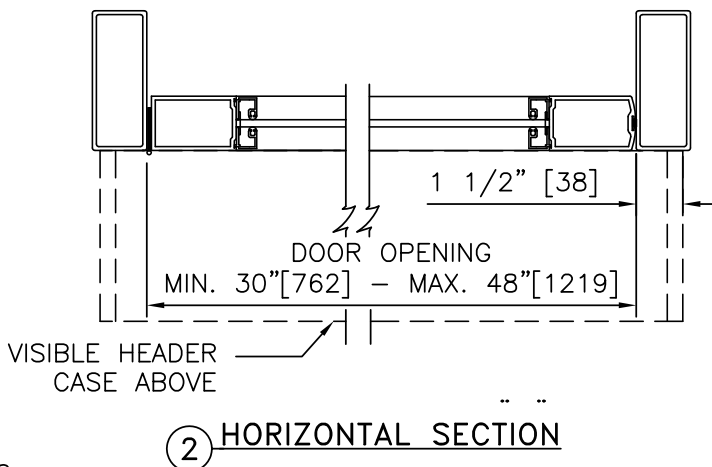
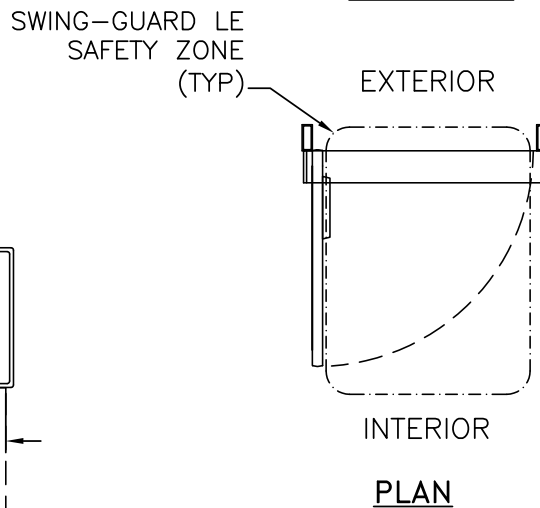
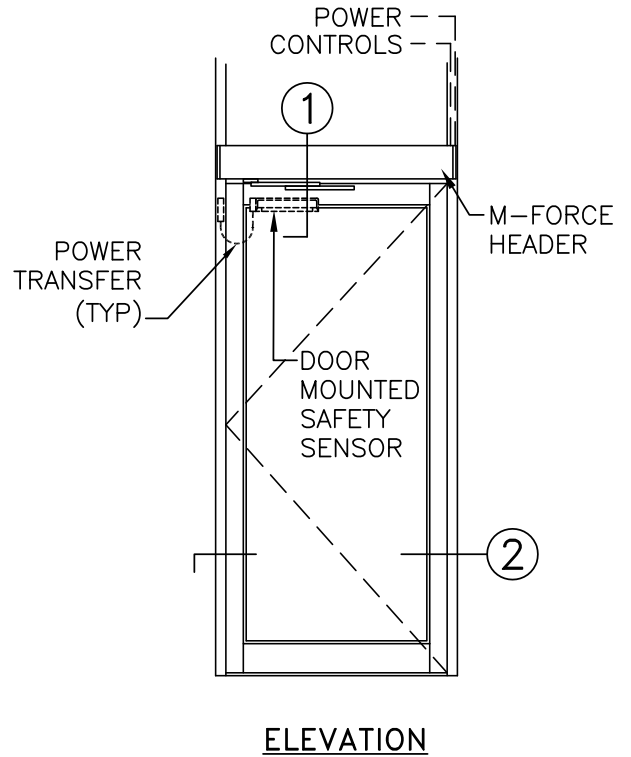
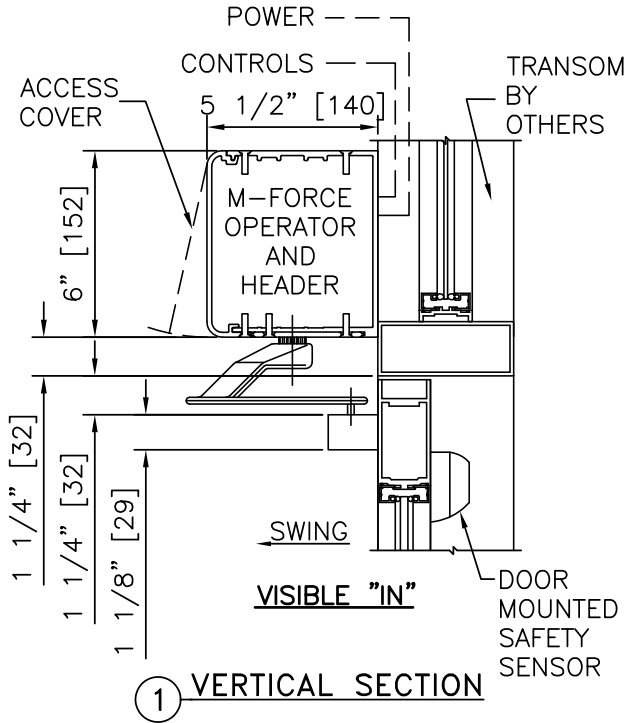
**2 HORIZONTAL SECTIONS**  
SCALE: 1 1/2" = 1'-0"

- NOTES**
- ELECTRICAL REQUIREMENTS: BY ELECTRICAL CONTRACTOR
    - 120 VAC, 5 AMP MIN TO OPERATOR.
    - CONTROL CIRCUIT FROM ACTIVATION TO OPERATOR.
  - DOORS, FRAMES, AND HARDWARE BY OTHERS.
  - DOORS MUST BE UN-LATCHED FOR PROPER OPERATION. PROVIDE TIME DELAY RELAY WHEN REQUIRED FOR PROPER OPERATION.
  - LIMITS OF SAFETY ZONES ARE PROVIDED FOR REFERENCE ONLY.
  - OPERATOR AND INSTALLATION TO COMPLY WITH ANSI/BHMA A156.19.
  - SEE SPECIFICATIONS FOR ADDITIONAL INFORMATION.

LOW ENERGY OPERATOR ON ALUMINUM DOOR & FRAME

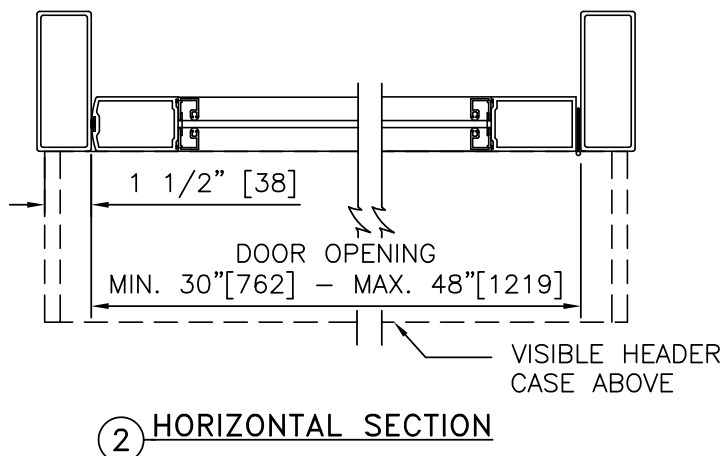
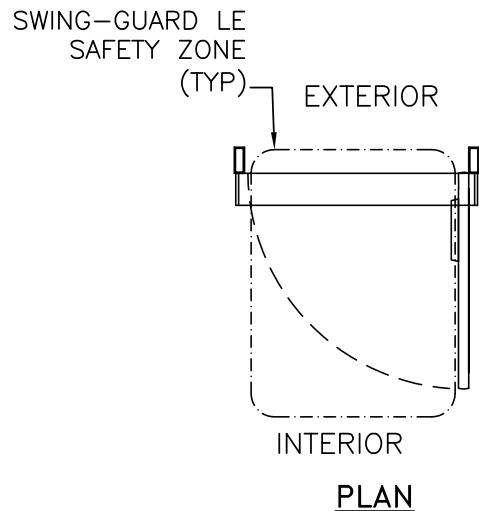
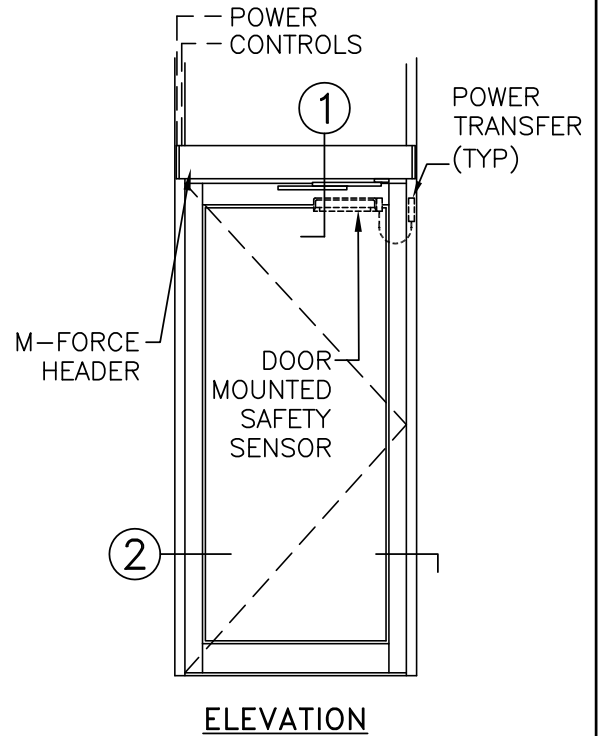
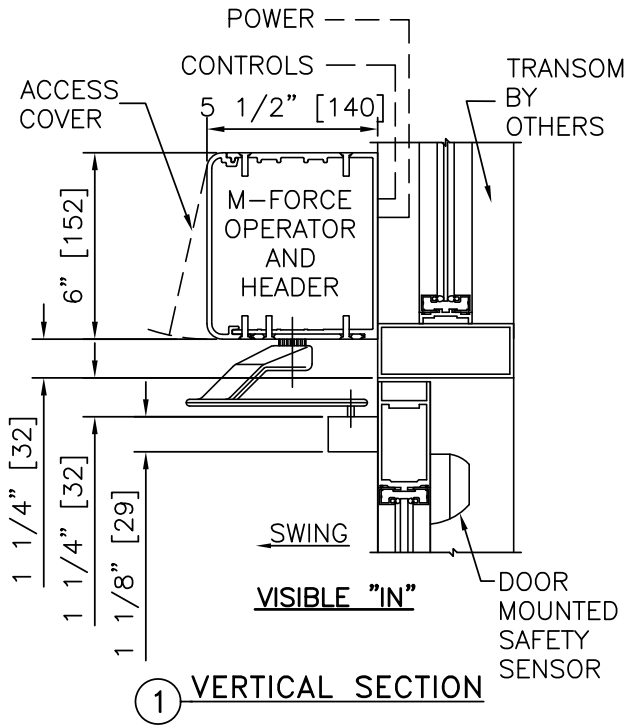
**M-FORCE™**  
(NEXT GENERATION MAGIC-FORCE™)  
**WITH**  
**SWING-GUARD® LE**

**STANLEY**  
Access Technologies



NOTES:

1. DETAILS NOT TO SCALE.
2. ELECTRICAL REQUIREMENTS: BY ELECTRICAL CONTRACTOR
  - 2.1. 120 VAC, 5 AMP MIN TO OPERATOR.
  - 2.2. CONTROL CIRCUIT FROM ACTIVATION TO OPERATOR.
3. DOORS, FRAMES, AND HARDWARE BY OTHERS.
4. DOORS MUST BE UN-LATCHED FOR PROPER OPERATION. PROVIDE TIME DELAY RELAY WHEN REQUIRED FOR PROPER OPERATION.
5. LIMITS OF SAFETY ZONES ARE PROVIDED FOR REFERENCE ONLY.
6. OPERATOR AND INSTALLATION TO COMPLY WITH ANSI/BHMA A156.10.
7. SEE SPECIFICATIONS FOR ADDITIONAL INFORMATION.



**NOTES:**

1. DETAILS NOT TO SCALE.
2. ELECTRICAL REQUIREMENTS: BY ELECTRICAL CONTRACTOR
  - 2.1. 120 VAC, 5 AMP MIN TO OPERATOR.
  - 2.2. CONTROL CIRCUIT FROM ACTIVATION TO OPERATOR.
3. DOORS, FRAMES, AND HARDWARE BY OTHERS.
4. DOORS MUST BE UN-LATCHED FOR PROPER OPERATION. PROVIDE TIME DELAY RELAY WHEN REQUIRED FOR PROPER OPERATION.
5. LIMITS OF SAFETY ZONES ARE PROVIDED FOR REFERENCE ONLY.
6. OPERATOR AND INSTALLATION TO COMPLY WITH ANSI/BHMA A156.10.
7. SEE SPECIFICATIONS FOR ADDITIONAL INFORMATION.

**M-FORCE™**  
(NEXT GENERATION MAGIC-FORCE™)  
**WITH**  
**SWING-GUARD® LE**

LOW ENERGY OPERATOR, AL FRAME, VISIBLE, RIGHT HAND OUT

PROJECT INFORMATION

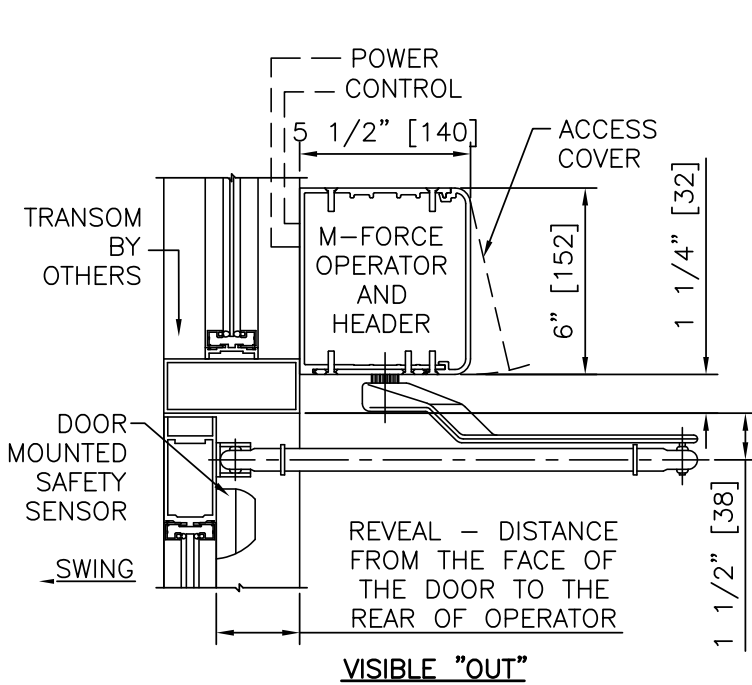
PROJECT NAME:

LOCATION:

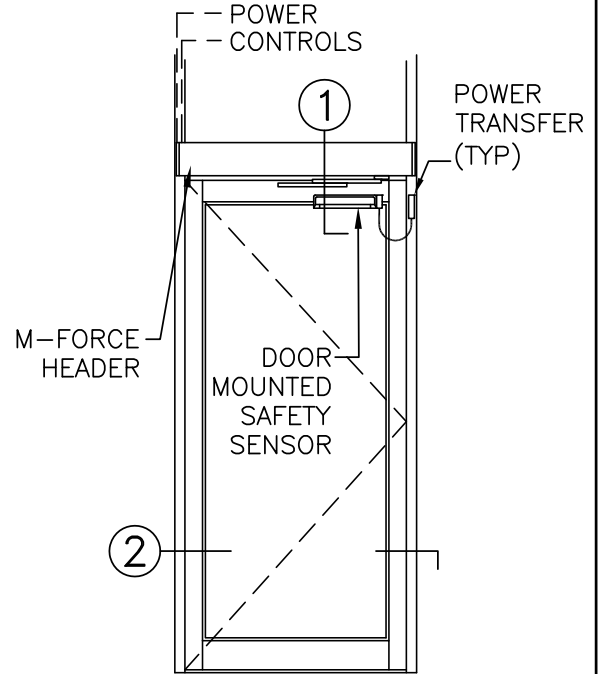
DOOR NUMBER(S):

DATE:

SHEET: OF

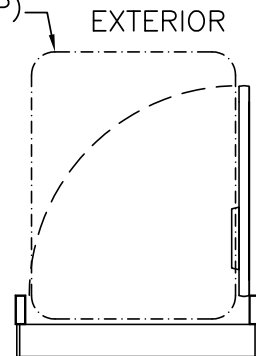


① VERTICAL SECTION

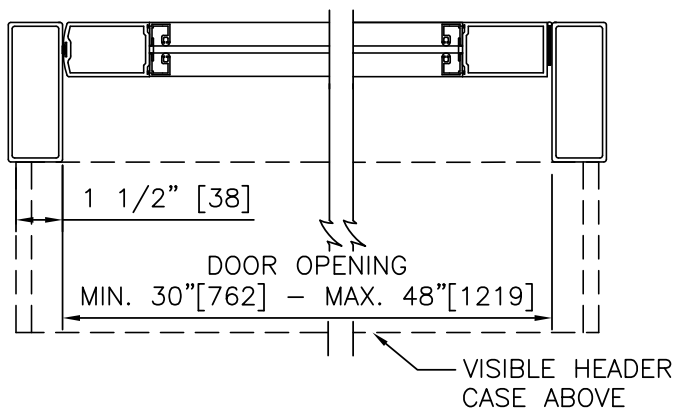


ELEVATION

SWING-GUARD LE  
SAFETY ZONE  
(TYP)



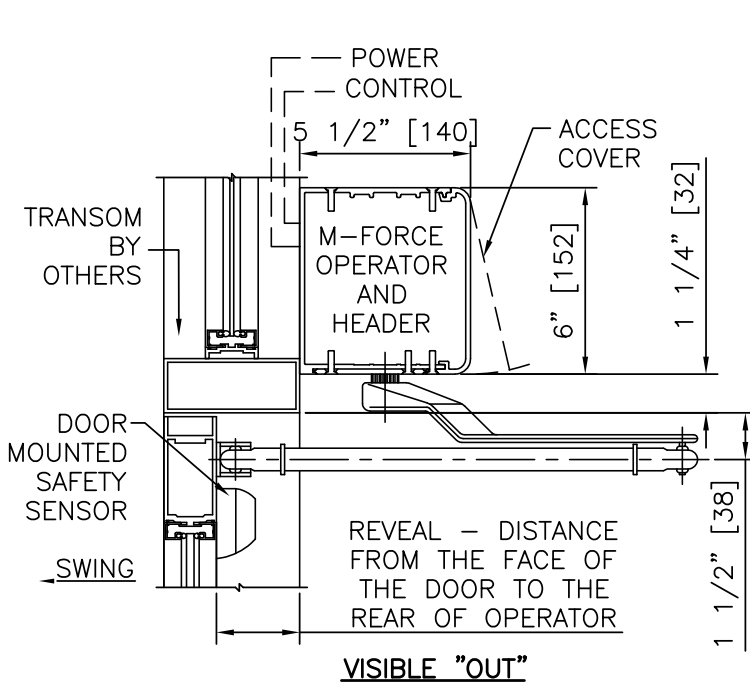
INTERIOR  
PLAN



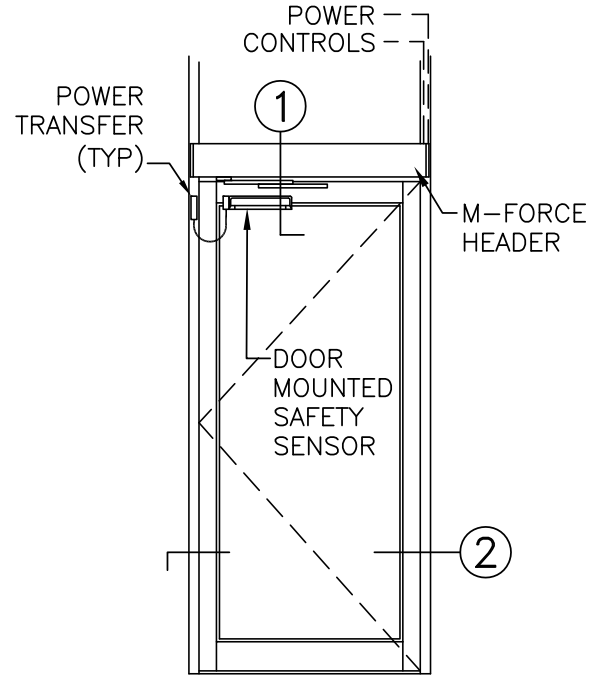
② HORIZONTAL SECTION

NOTES:

1. DETAILS NOT TO SCALE.
2. ELECTRICAL REQUIREMENTS: BY ELECTRICAL CONTRACTOR
  - 2.1. 120 VAC, 5 AMP MIN TO OPERATOR.
  - 2.2. CONTROL CIRCUIT FROM ACTIVATION TO OPERATOR.
3. DOORS, FRAMES, AND HARDWARE BY OTHERS.
4. DOORS MUST BE UN-LATCHED FOR PROPER OPERATION. PROVIDE TIME DELAY RELAY WHEN REQUIRED FOR PROPER OPERATION.
5. LIMITS OF SAFETY ZONES ARE PROVIDED FOR REFERENCE ONLY.
6. OPERATOR AND INSTALLATION TO COMPLY WITH ANSI/BHMA A156.10.
7. SEE SPECIFICATIONS FOR ADDITIONAL INFORMATION.

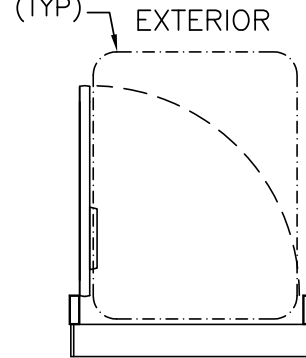


① VERTICAL SECTION

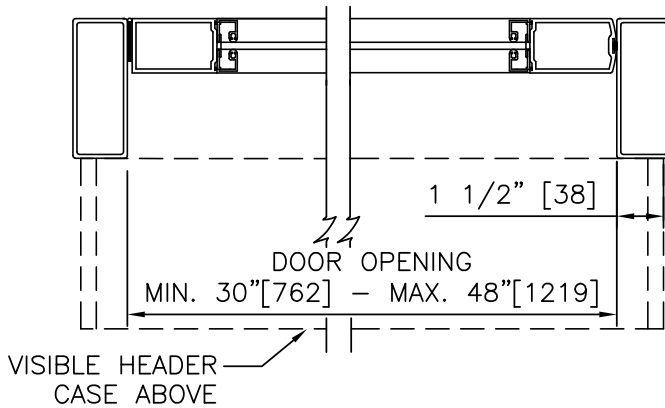


ELEVATION

SWING-GUARD LE  
SAFETY ZONE  
(TYP)



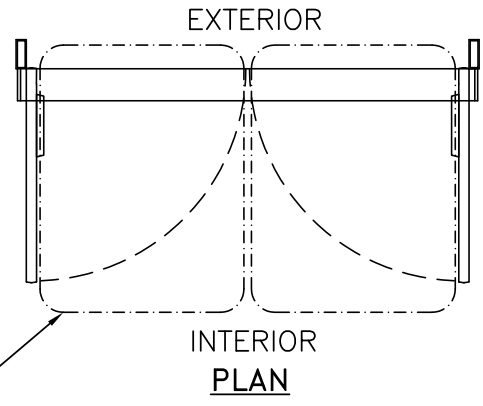
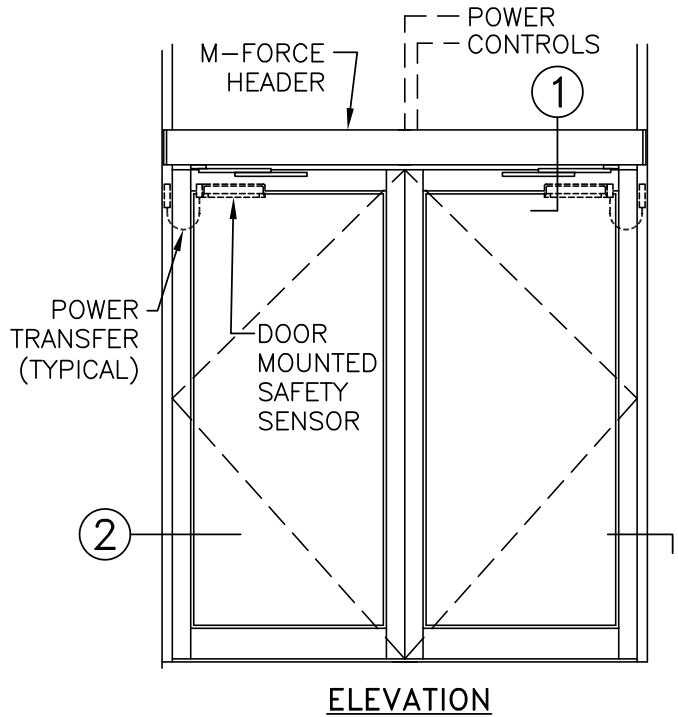
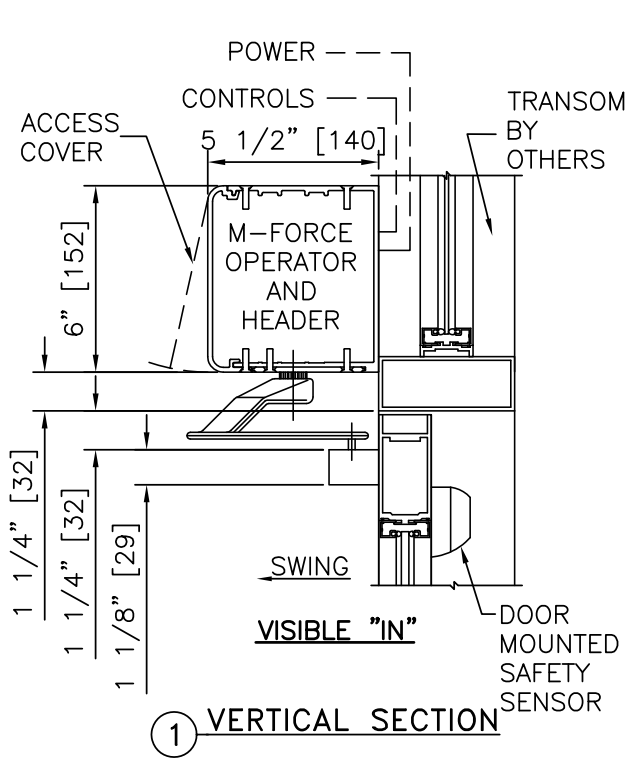
INTERIOR  
PLAN



② HORIZONTAL SECTION

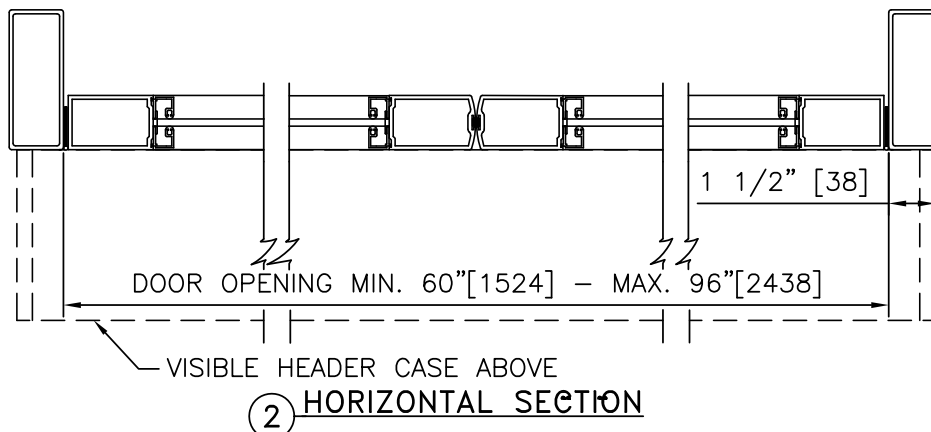
NOTES:

1. DETAILS NOT TO SCALE.
2. ELECTRICAL REQUIREMENTS: BY ELECTRICAL CONTRACTOR
  - 2.1. 120 VAC, 5 AMP MIN TO OPERATOR.
  - 2.2. CONTROL CIRCUIT FROM ACTIVATION TO OPERATOR.
3. DOORS, FRAMES, AND HARDWARE BY OTHERS.
4. DOORS MUST BE UN-LATCHED FOR PROPER OPERATION. PROVIDE TIME DELAY RELAY WHEN REQUIRED FOR PROPER OPERATION.
5. LIMITS OF SAFETY ZONES ARE PROVIDED FOR REFERENCE ONLY.
6. OPERATOR AND INSTALLATION TO COMPLY WITH ANSI/BHMA A156.10.
7. SEE SPECIFICATIONS FOR ADDITIONAL INFORMATION.



**NOTES:**

1. DETAILS NOT TO SCALE.
2. ELECTRICAL REQUIREMENTS: BY ELECTRICAL CONTRACTOR
  - 2.1. 120 VAC, 5 AMP MIN TO OPERATOR.
  - 2.2. CONTROL CIRCUIT FROM ACTIVATION TO OPERATOR.
3. DOORS, FRAMES, AND HARDWARE BY OTHERS.
4. DOORS MUST BE UN-LATCHED FOR PROPER OPERATION. PROVIDE TIME DELAY RELAY WHEN REQUIRED FOR PROPER OPERATION.
5. LIMITS OF SAFETY ZONES ARE PROVIDED FOR REFERENCE ONLY.
6. OPERATOR AND INSTALLATION TO COMPLY WITH ANSI/BHMA A156.10.
7. SEE SPECIFICATIONS FOR ADDITIONAL INFORMATION.



**M-FORCE™**  
(NEXT GENERATION MAGIC-FORCE™)  
**WITH**  
**SWING-GUARD® LE**

LOW ENERGY OPERATOR, AL FRAME, VISIBLE, PAIR OUT

PROJECT INFORMATION

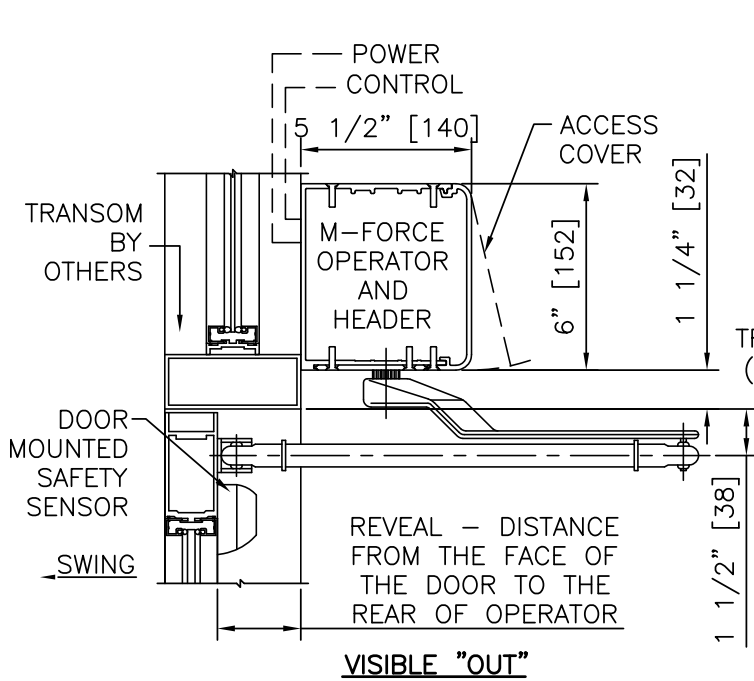
PROJECT NAME:

LOCATION:

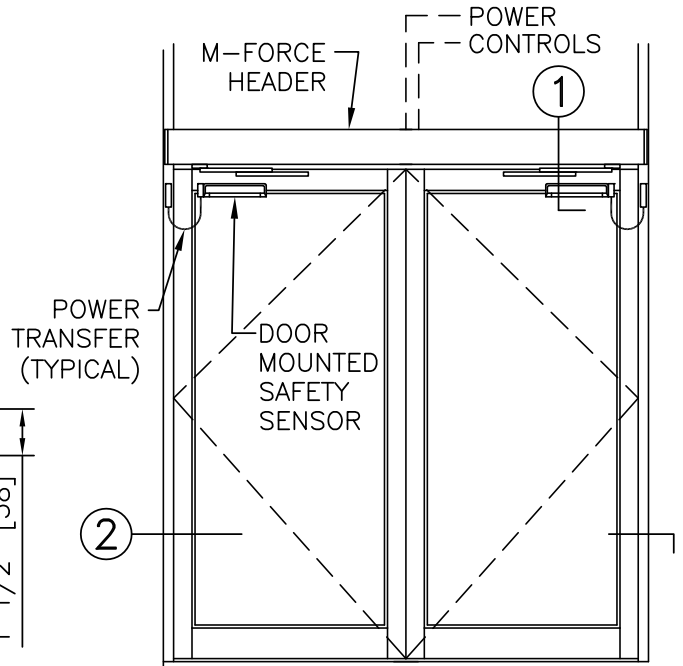
DOOR NUMBER(S):

DATE:

SHEET: OF

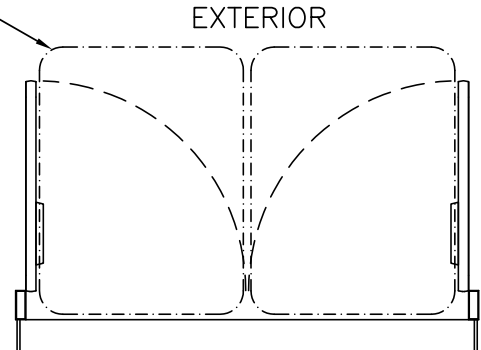


① VERTICAL SECTION



ELEVATION

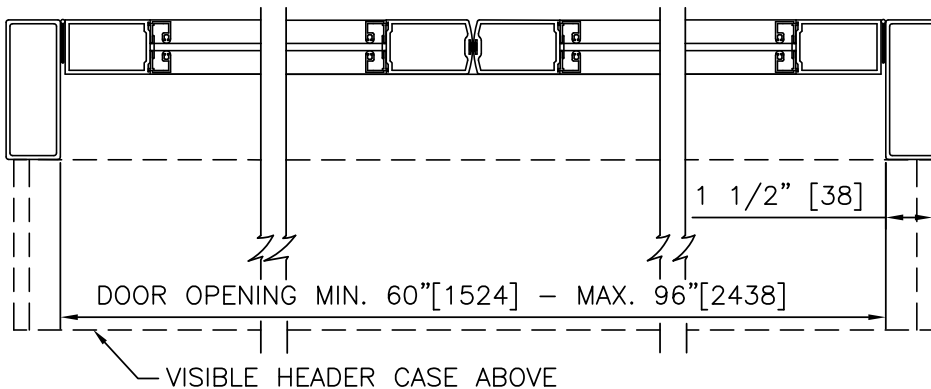
SWING-GUARD LE  
SAFETY ZONE  
(TYP)



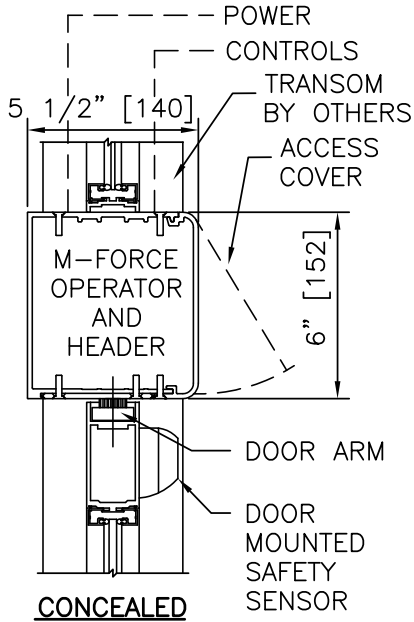
INTERIOR  
PLAN

NOTES:

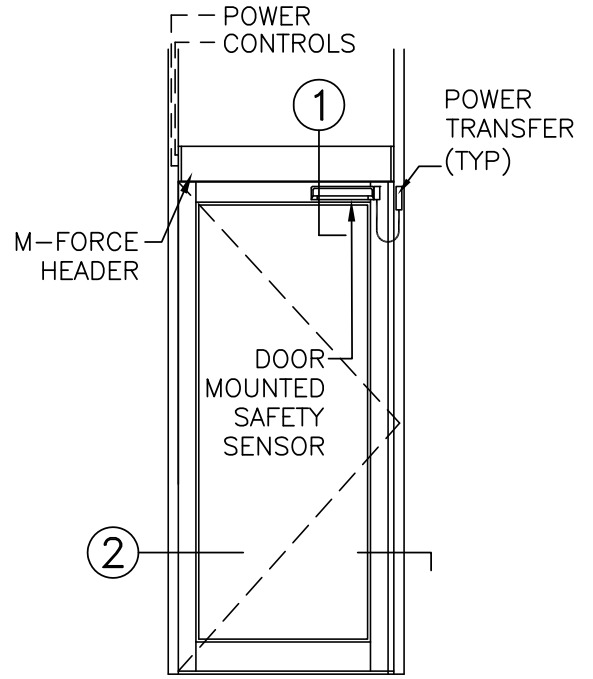
1. DETAILS NOT TO SCALE.
2. ELECTRICAL REQUIREMENTS: BY ELECTRICAL CONTRACTOR
  - 2.1. 120 VAC, 5 AMP MIN TO OPERATOR.
  - 2.2. CONTROL CIRCUIT FROM ACTIVATION TO OPERATOR.
3. DOORS, FRAMES, AND HARDWARE BY OTHERS.
4. DOORS MUST BE UN-LATCHED FOR PROPER OPERATION. PROVIDE TIME DELAY RELAY WHEN REQUIRED FOR PROPER OPERATION.
5. LIMITS OF SAFETY ZONES ARE PROVIDED FOR REFERENCE ONLY.
6. OPERATOR AND INSTALLATION TO COMPLY WITH ANSI/BHMA A156.10.
7. SEE SPECIFICATIONS FOR ADDITIONAL INFORMATION.



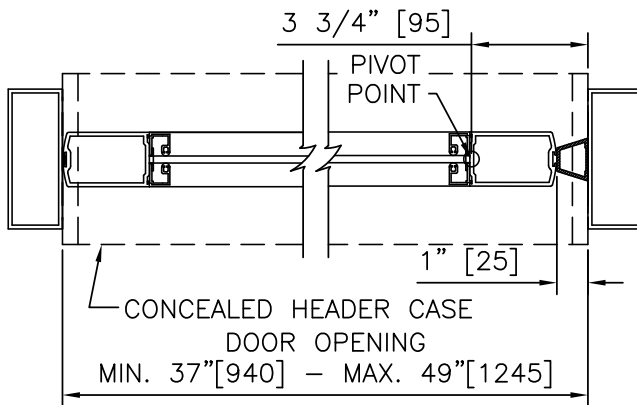
② HORIZONTAL SECTION



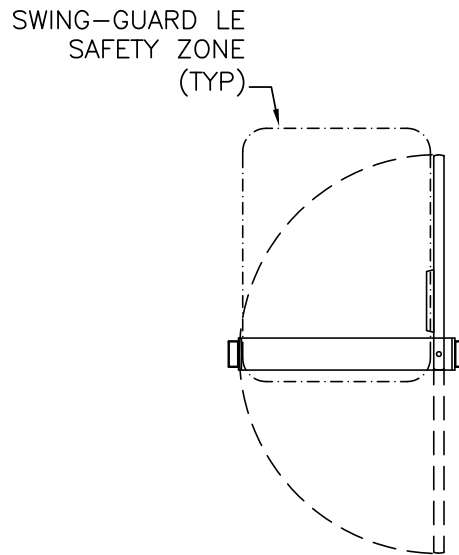
① VERTICAL SECTION



ELEVATION



② HORIZONTAL SECTION

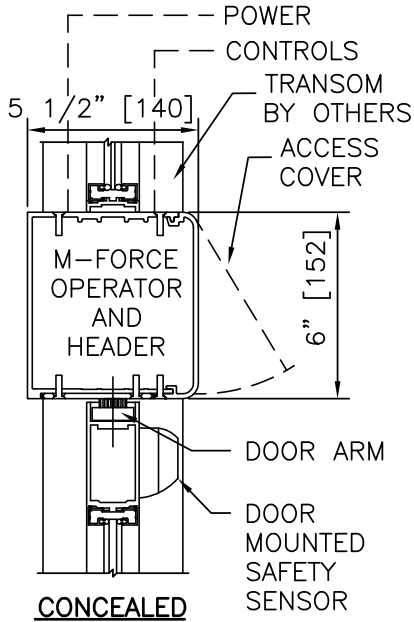


PLAN

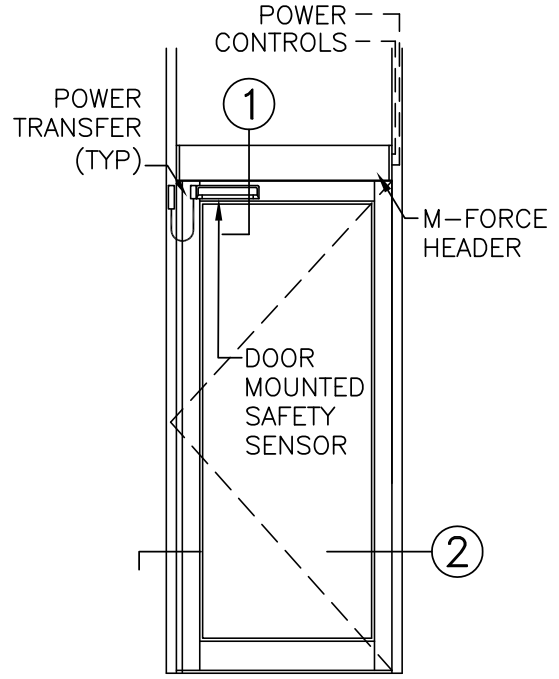
**NOTES:**

1. DETAILS NOT TO SCALE.
2. ELECTRICAL REQUIREMENTS: BY ELECTRICAL CONTRACTOR
  - 2.1. 120 VAC, 5 AMP MIN TO OPERATOR.
  - 2.2. CONTROL CIRCUIT FROM ACTIVATION TO OPERATOR.
3. DOORS, FRAMES, AND HARDWARE BY OTHERS.
4. DOORS MUST BE UN-LATCHED FOR PROPER OPERATION. PROVIDE TIME DELAY RELAY WHEN REQUIRED FOR PROPER OPERATION.
5. LIMITS OF SAFETY ZONES ARE PROVIDED FOR REFERENCE ONLY.
6. OPERATOR AND INSTALLATION TO COMPLY WITH ANSI/BHMA A156.10.
7. SEE SPECIFICATIONS FOR ADDITIONAL INFORMATION.



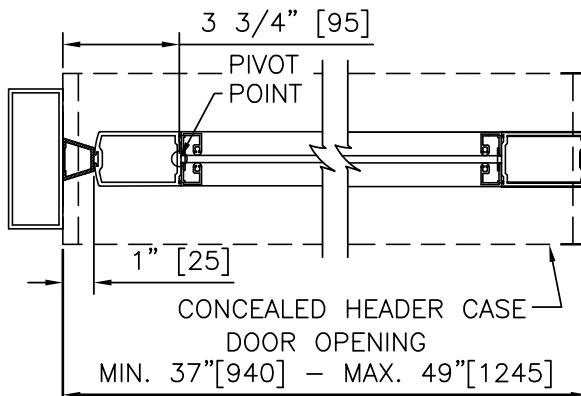


① VERTICAL SECTION

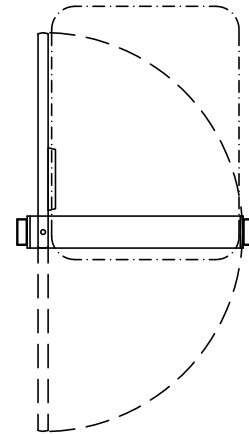


ELEVATION

SWING-GUARD LE  
SAFETY ZONE  
(TYP)



② HORIZONTAL SECTION



PLAN

**NOTES:**

1. DETAILS NOT TO SCALE.
2. ELECTRICAL REQUIREMENTS: BY ELECTRICAL CONTRACTOR
  - 2.1. 120 VAC, 5 AMP MIN TO OPERATOR.
  - 2.2. CONTROL CIRCUIT FROM ACTIVATION TO OPERATOR.
3. DOORS, FRAMES, AND HARDWARE BY OTHERS.
4. DOORS MUST BE UN-LATCHED FOR PROPER OPERATION. PROVIDE TIME DELAY RELAY WHEN REQUIRED FOR PROPER OPERATION.
5. LIMITS OF SAFETY ZONES ARE PROVIDED FOR REFERENCE ONLY.
6. OPERATOR AND INSTALLATION TO COMPLY WITH ANSI/BHMA A156.10.
7. SEE SPECIFICATIONS FOR ADDITIONAL INFORMATION.

**M-FORCE™**  
(NEXT GENERATION MAGIC-FORCE™)  
**WITH**  
**SWING-GUARD® LE**

LOW ENERGY OPERATOR, AL FRAME, CONCEALED, PAIR

PROJECT INFORMATION

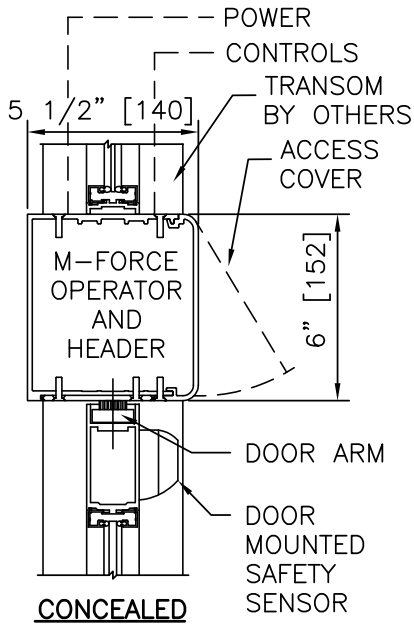
PROJECT NAME:

LOCATION:

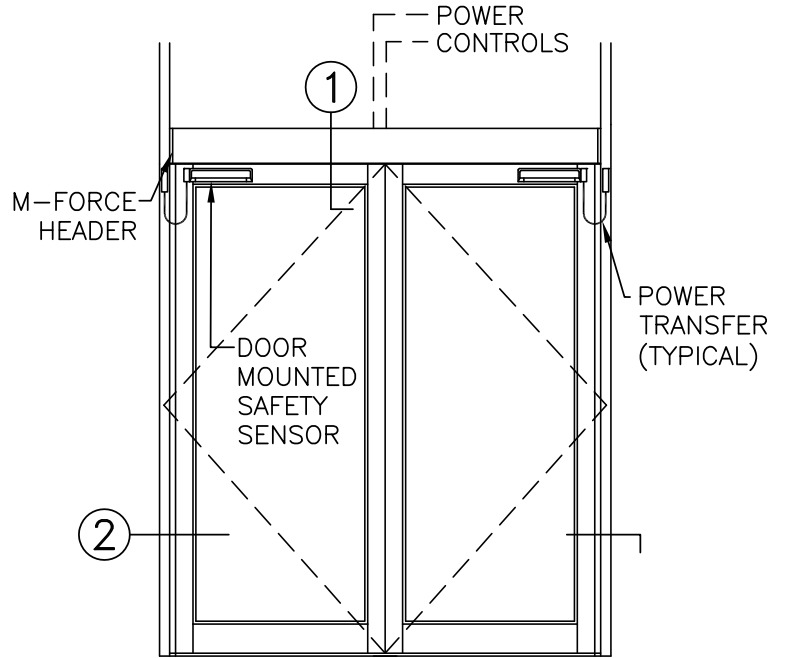
DOOR NUMBER(S):

DATE:

SHEET: OF

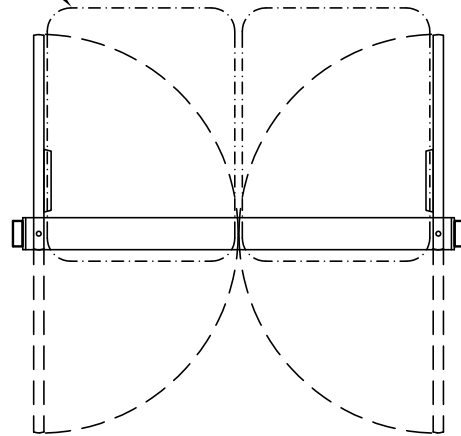


① VERTICAL SECTION



ELEVATION

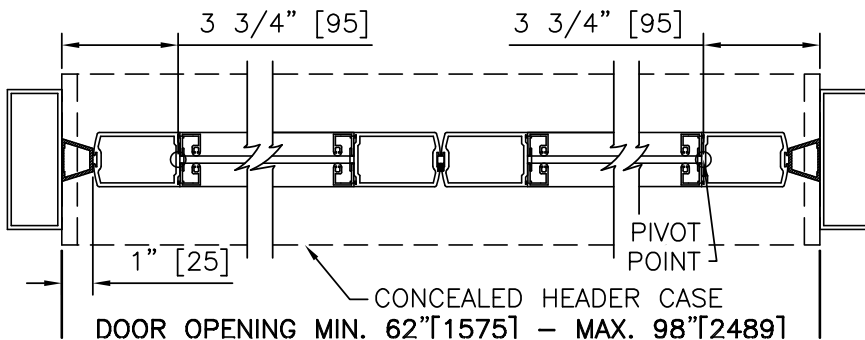
SWING-GUARD LE  
SAFETY ZONE  
(TYP)



PLAN

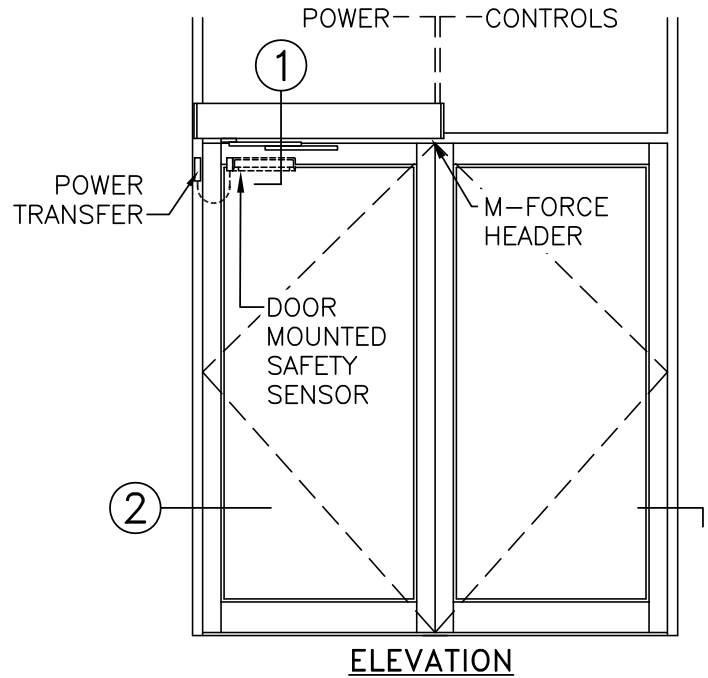
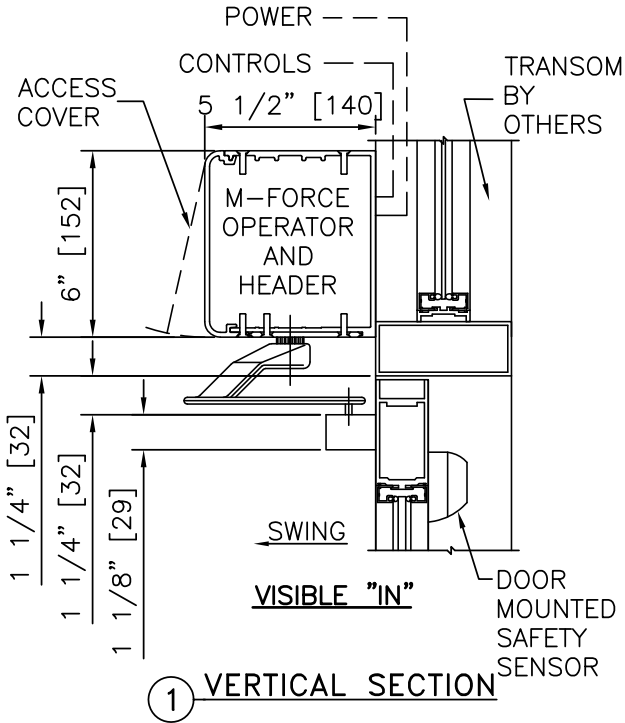
**NOTES:**

1. DETAILS NOT TO SCALE.
2. ELECTRICAL REQUIREMENTS: BY ELECTRICAL CONTRACTOR
  - 2.1. 120 VAC, 5 AMP MIN TO OPERATOR.
  - 2.2. CONTROL CIRCUIT FROM ACTIVATION TO OPERATOR.
3. DOORS, FRAMES, AND HARDWARE BY OTHERS.
4. DOORS MUST BE UN-LATCHED FOR PROPER OPERATION. PROVIDE TIME DELAY RELAY WHEN REQUIRED FOR PROPER OPERATION.
5. LIMITS OF SAFETY ZONES ARE PROVIDED FOR REFERENCE ONLY.
6. OPERATOR AND INSTALLATION TO COMPLY WITH ANSI/BHMA A156.10.
7. SEE SPECIFICATIONS FOR ADDITIONAL INFORMATION.



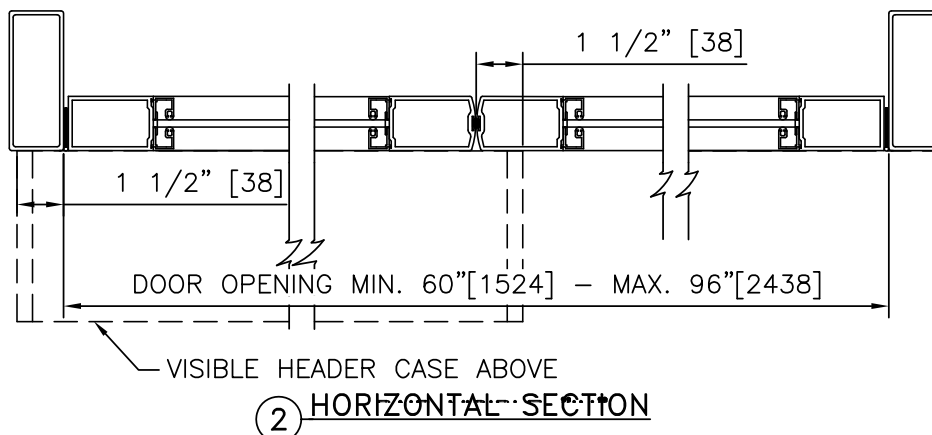
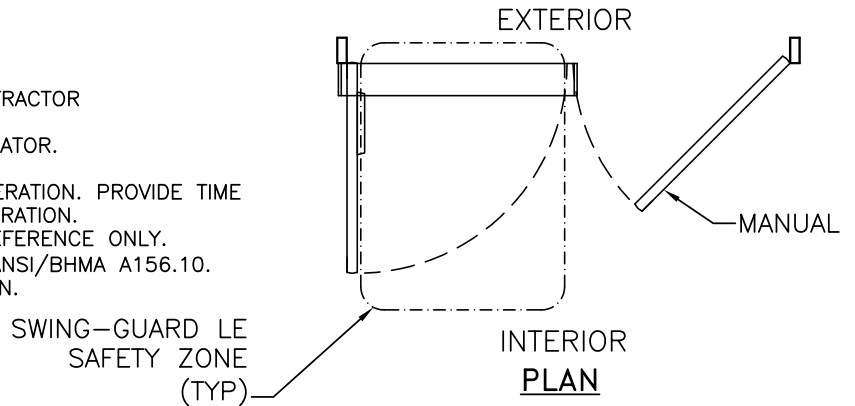
② HORIZONTAL SECTION

LE OPERATOR, AL FRAME, VISIBLE, SINGLE ON PAIR, RIGHT HAND IN	
PROJECT INFORMATION	
PROJECT NAME:	
LOCATION:	
DOOR NUMBER(S):	
DATE:	SHEET: OF

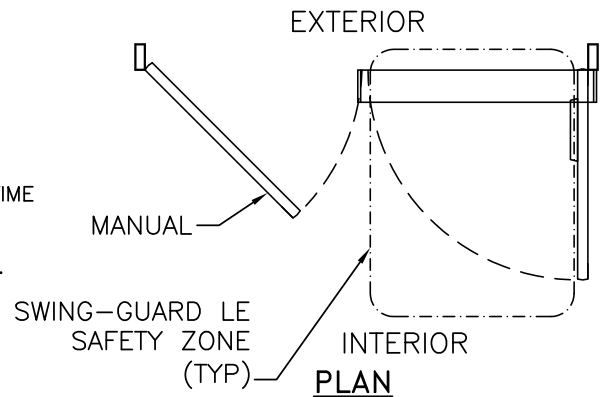
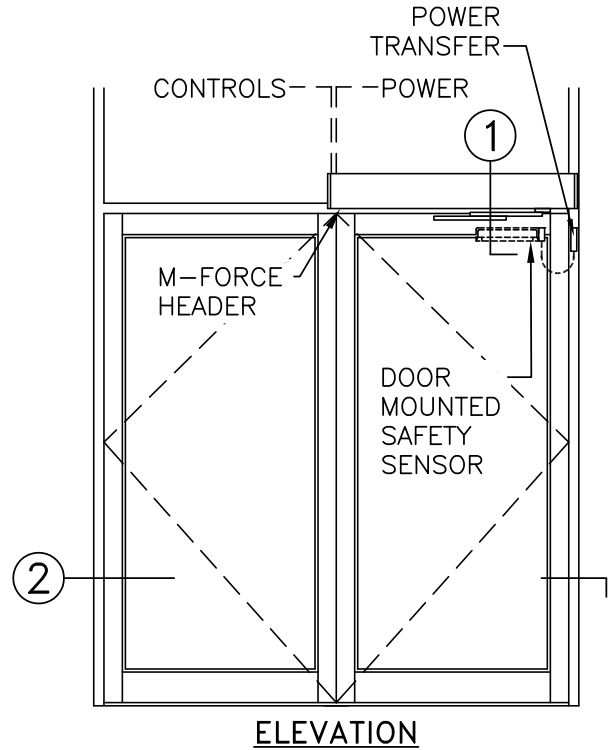
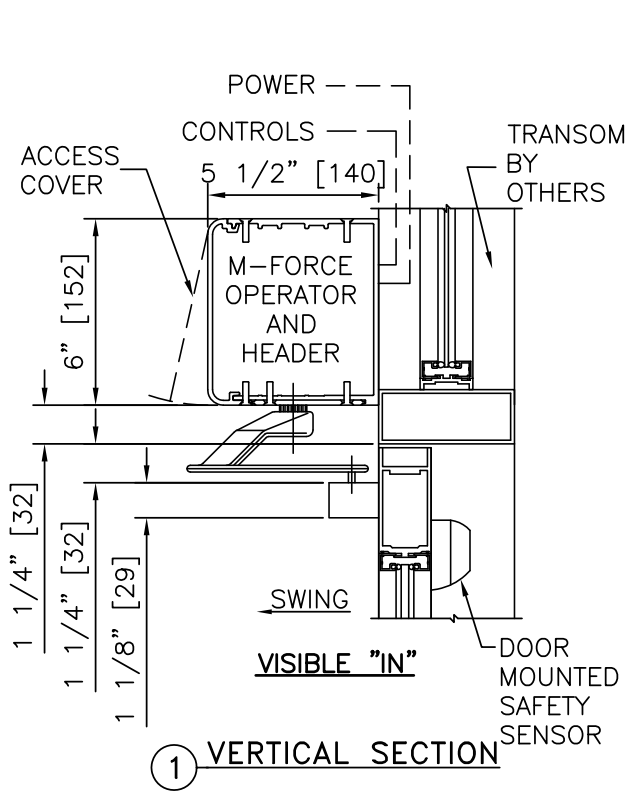


**NOTES:**

1. DETAILS NOT TO SCALE.
2. ELECTRICAL REQUIREMENTS: BY ELECTRICAL CONTRACTOR
  - 2.1. 120 VAC, 5 AMP MIN TO OPERATOR.
  - 2.2. CONTROL CIRCUIT FROM ACTIVATION TO OPERATOR.
3. DOORS, FRAMES, AND HARDWARE BY OTHERS.
4. DOORS MUST BE UN-LATCHED FOR PROPER OPERATION. PROVIDE TIME DELAY RELAY WHEN REQUIRED FOR PROPER OPERATION.
5. LIMITS OF SAFETY ZONES ARE PROVIDED FOR REFERENCE ONLY.
6. OPERATOR AND INSTALLATION TO COMPLY WITH ANSI/BHMA A156.10.
7. SEE SPECIFICATIONS FOR ADDITIONAL INFORMATION.

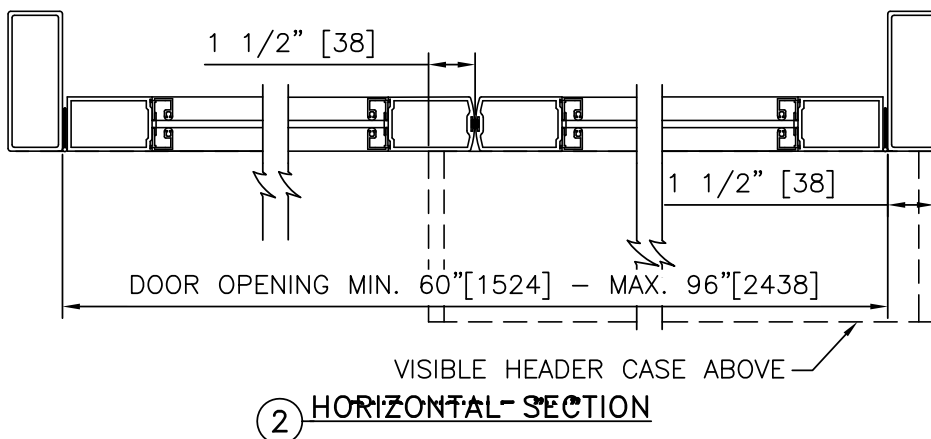


LE OPERATOR, AL FRAME, VISIBLE, SINGLE ON PAIR, LEFT HAND IN	
PROJECT INFORMATION	
PROJECT NAME:	
LOCATION:	
DOOR NUMBER(S):	
DATE:	SHEET: OF



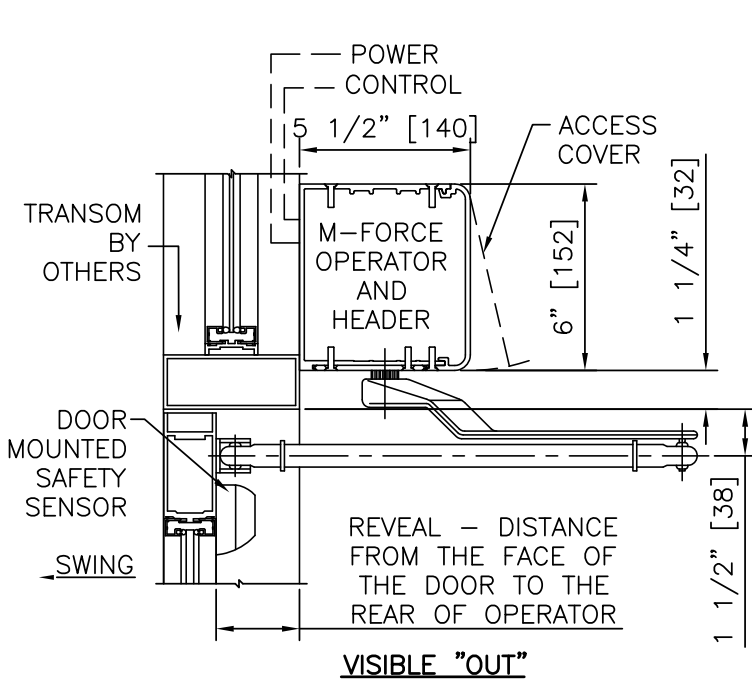
**NOTES:**

1. DETAILS NOT TO SCALE.
2. ELECTRICAL REQUIREMENTS: BY ELECTRICAL CONTRACTOR
  - 2.1. 120 VAC, 5 AMP MIN TO OPERATOR.
  - 2.2. CONTROL CIRCUIT FROM ACTIVATION TO OPERATOR.
3. DOORS, FRAMES, AND HARDWARE BY OTHERS.
4. DOORS MUST BE UN-LATCHED FOR PROPER OPERATION. PROVIDE TIME DELAY RELAY WHEN REQUIRED FOR PROPER OPERATION.
5. LIMITS OF SAFETY ZONES ARE PROVIDED FOR REFERENCE ONLY.
6. OPERATOR AND INSTALLATION TO COMPLY WITH ANSI/BHMA A156.10.
7. SEE SPECIFICATIONS FOR ADDITIONAL INFORMATION.

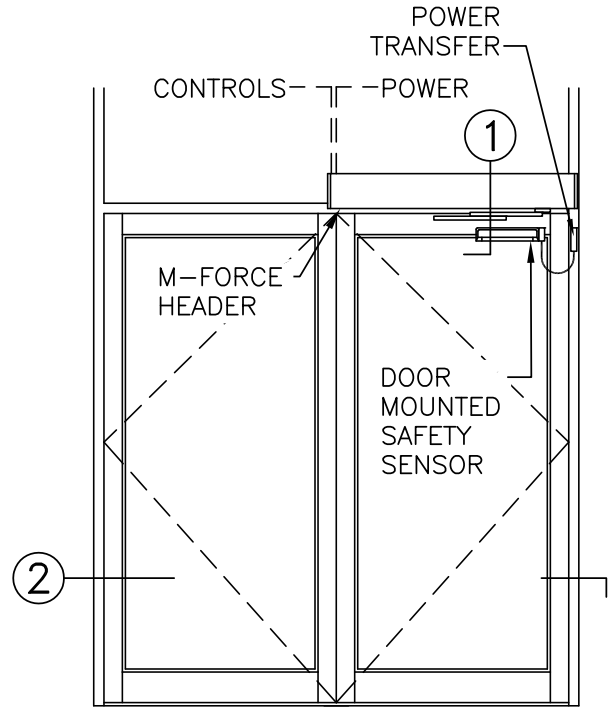


**M-FORCE™**  
(NEXT GENERATION MAGIC-FORCE™)  
**WITH**  
**SWING-GUARD® LE**

LE OPERATOR, AL FRAME, VISIBLE, SINGLE ON PAIR, RIGHT HAND OUT	
PROJECT INFORMATION	
PROJECT NAME:	
LOCATION:	
DOOR NUMBER(S):	
DATE:	SHEET: OF



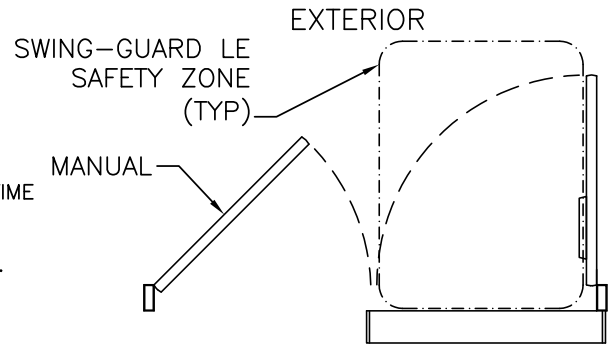
① VERTICAL SECTION



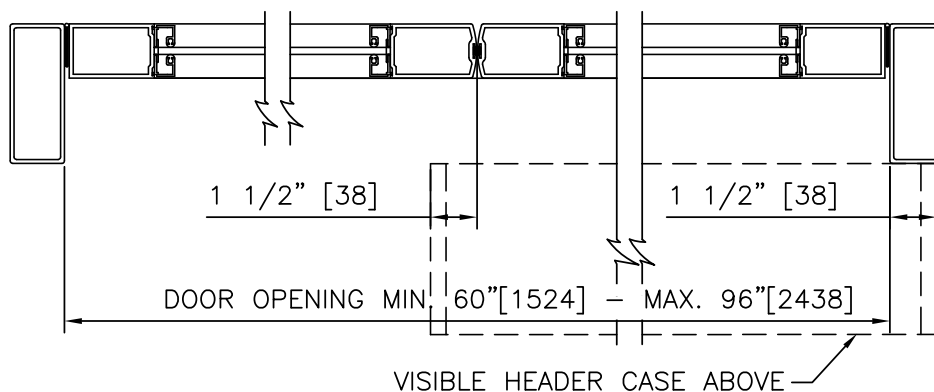
ELEVATION

**NOTES:**

1. DETAILS NOT TO SCALE.
2. ELECTRICAL REQUIREMENTS: BY ELECTRICAL CONTRACTOR
  - 2.1. 120 VAC, 5 AMP MIN TO OPERATOR.
  - 2.2. CONTROL CIRCUIT FROM ACTIVATION TO OPERATOR.
3. DOORS, FRAMES, AND HARDWARE BY OTHERS.
4. DOORS MUST BE UN-LATCHED FOR PROPER OPERATION. PROVIDE TIME DELAY RELAY WHEN REQUIRED FOR PROPER OPERATION.
5. LIMITS OF SAFETY ZONES ARE PROVIDED FOR REFERENCE ONLY.
6. OPERATOR AND INSTALLATION TO COMPLY WITH ANSI/BHMA A156.10.
7. SEE SPECIFICATIONS FOR ADDITIONAL INFORMATION.



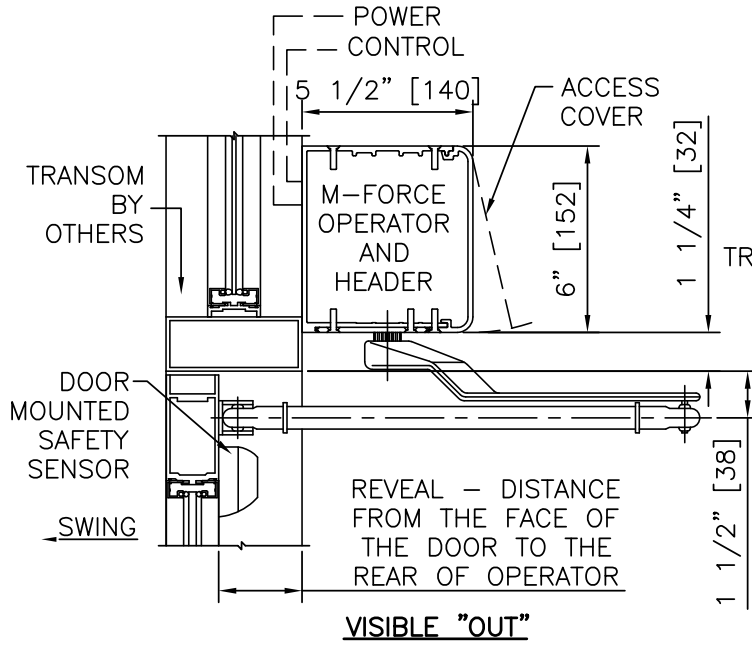
INTERIOR PLAN



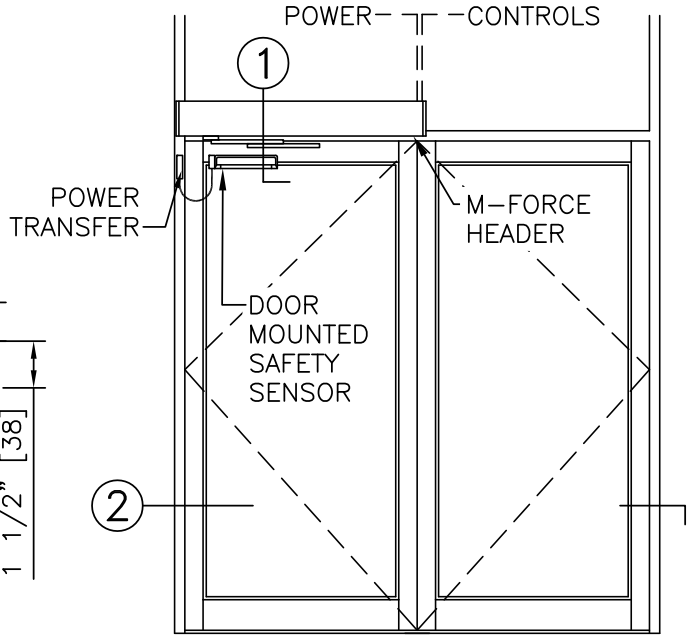
② HORIZONTAL SECTION

**M-FORCE™**  
(NEXT GENERATION MAGIC-FORCE™)  
**WITH**  
**SWING-GUARD® LE**

<b>LE OPERATOR, AL FRAME, VISIBLE, SINGLE ON PAIR, LEFT HAND OUT</b>	
PROJECT INFORMATION	
PROJECT NAME:	
LOCATION:	
DOOR NUMBER(S):	
DATE:	SHEET: OF



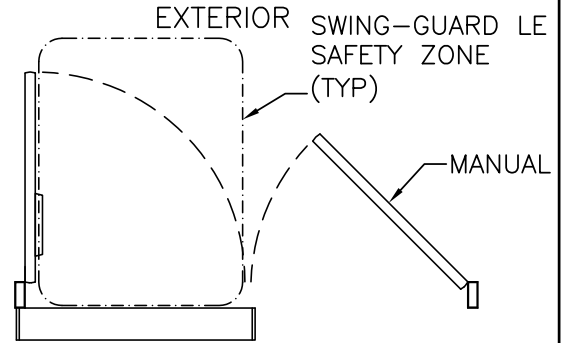
① **VERTICAL SECTION**



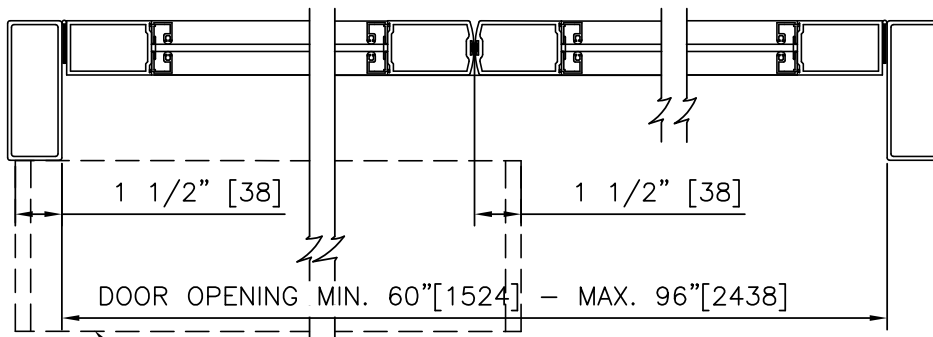
**ELEVATION**

**NOTES:**

1. DETAILS NOT TO SCALE.
2. ELECTRICAL REQUIREMENTS: BY ELECTRICAL CONTRACTOR
  - 2.1. 120 VAC, 5 AMP MIN TO OPERATOR.
  - 2.2. CONTROL CIRCUIT FROM ACTIVATION TO OPERATOR.
3. DOORS, FRAMES, AND HARDWARE BY OTHERS.
4. DOORS MUST BE UN-LATCHED FOR PROPER OPERATION. PROVIDE TIME DELAY RELAY WHEN REQUIRED FOR PROPER OPERATION.
5. LIMITS OF SAFETY ZONES ARE PROVIDED FOR REFERENCE ONLY.
6. OPERATOR AND INSTALLATION TO COMPLY WITH ANSI/BHMA A156.10.
7. SEE SPECIFICATIONS FOR ADDITIONAL INFORMATION.



**INTERIOR PLAN**



② **HORIZONTAL SECTION**