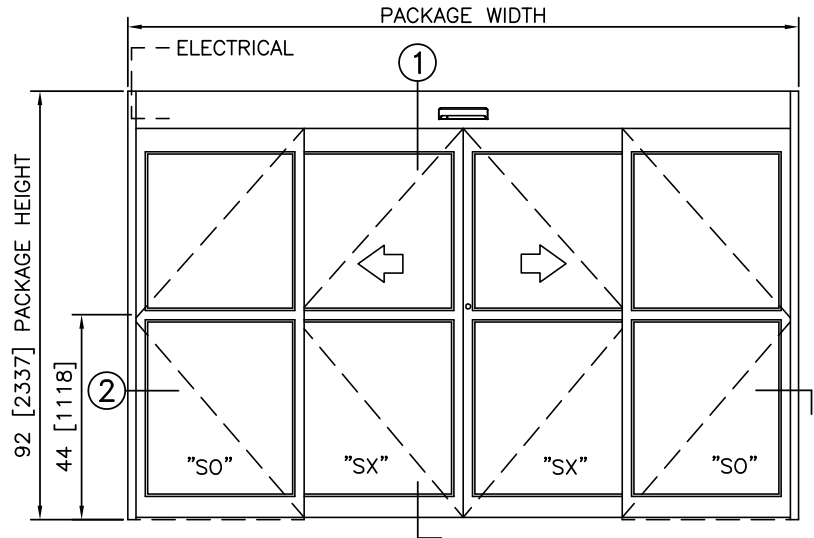


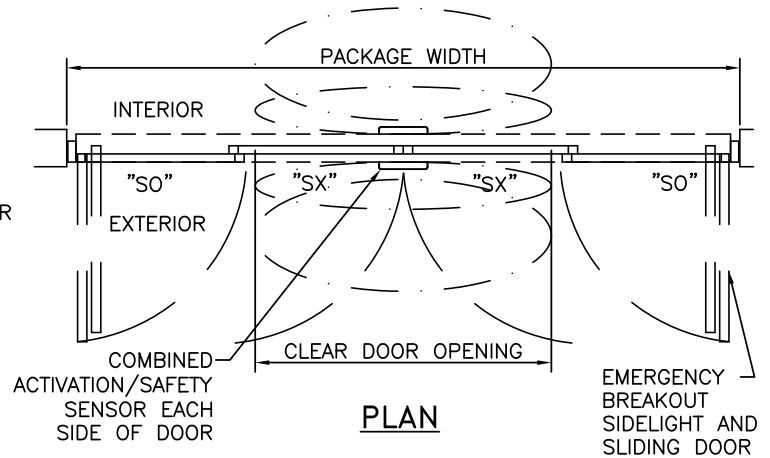
① VERTICAL SECTION



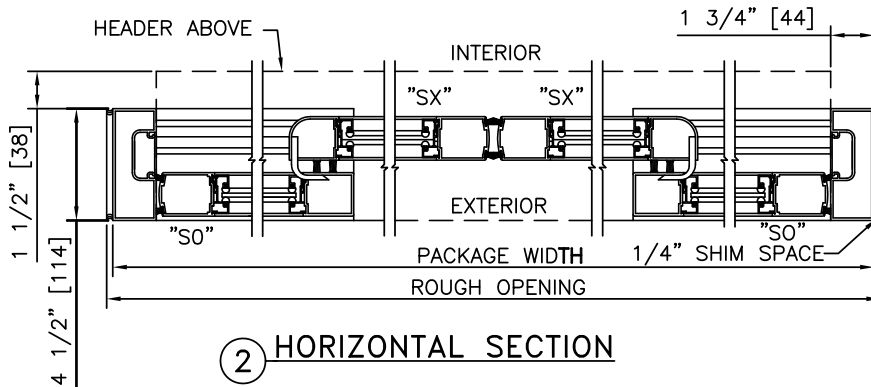
ELEVATION

NOTES

1. ELECTRICAL REQUIREMENTS: 120 VAC, 5 AMP MIN TO POWER OPERATOR BY ELECTRICAL CONTRACTOR.
2. ROUGH OPENING SHALL PROVIDE 1/4" [6] SHIM SPACE ON SIDES AND TOP OF PACKAGE.
3. LIMITS OF ACTIVATION AND SAFETY ZONES ARE FOR REFERENCE ONLY; SEE ANSI/BHMA A156.10 FOR DETAILED REQUIREMENTS.
4. SEE SPECIFICATIONS FOR ADDITIONAL INFORMATION.



PLAN



② HORIZONTAL SECTION

| TYPICAL PACKAGE DIMENSIONS (NARROW STILE) | | | |
|---|----------------------------|--------------------------|-------------------------------|
| PACKAGE WIDTH | NOMINAL CLEAR DOOR OPENING | DOOR PANEL NOMINAL WIDTH | EMERGENCY BREAKOUT NOM. WIDTH |
| 120" | 48.3" | 30.3" | 105.5" |
| 144" | 60.3" | 36.3" | 129.5" |
| 168" | 72.3" | 42.3" | 153.5" |