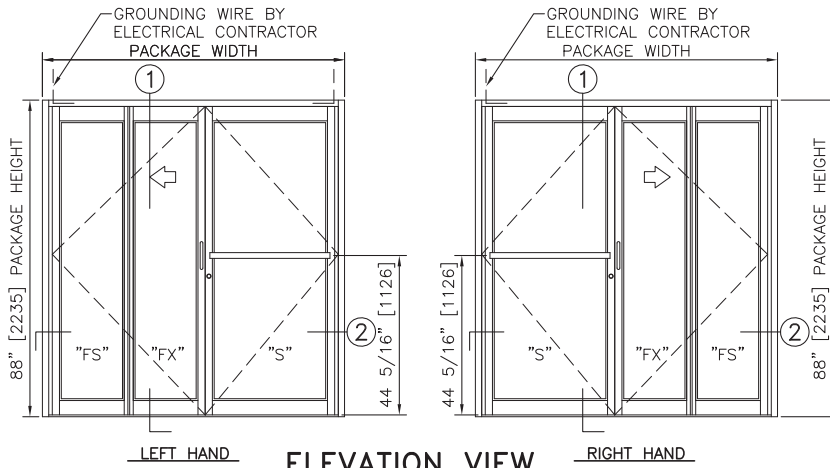
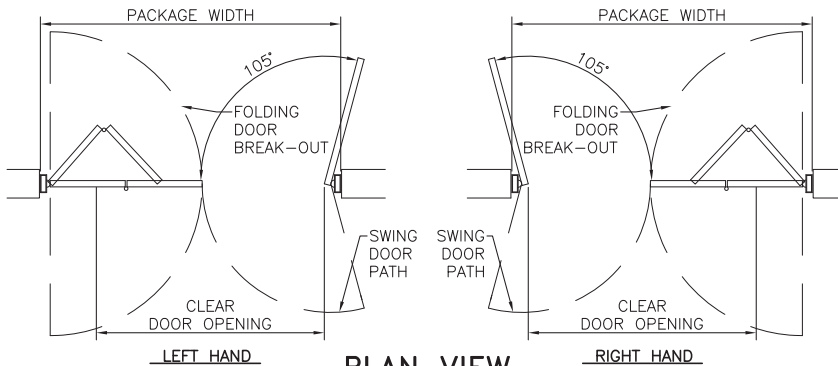




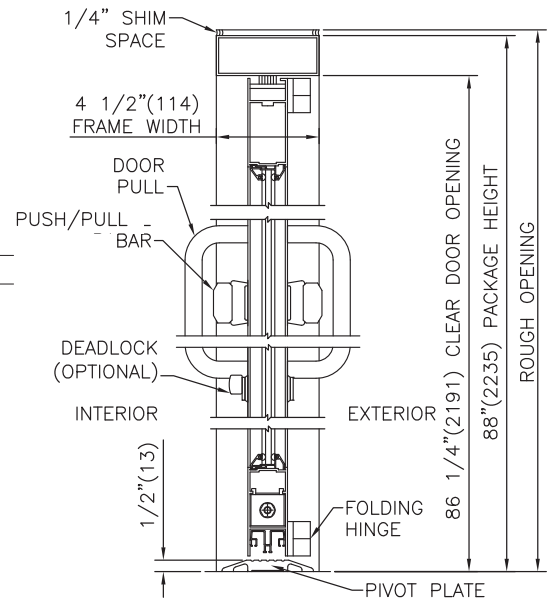
<b>CONFIGURATIONS:</b>	Combined, single swing and 2-Panel folding door system
<b>TYPICAL HEIGHT:</b>	90" (Std); 96" Max.
<b>TYPICAL WIDTH:</b>	84" to 120", with 36", 42" or 48" swing panel
<b>HEADER SIZE:</b>	1 3/4" Nominal Height
<b>BREAKOUT:</b>	Full Breakout, Any Position
<b>JAMB DIMENSION:</b>	4 1/2" x 1 3/4"
<b>CLEAR DOOR OPENING:</b>	63 3/4" to 99 3/4"
<b>BREAKOUT OPENING:</b>	Issue here to work out with Dan/Vito
<b>SUPPORTED GLAZING:</b>	1/4" (Std); 5/8", 1/2", 1" Insulated supported
<b>STILES:</b>	Narrow
<b>BOTTOM RAILS:</b>	4" (Std), 6", 8", 12", other custom
<b>FINISHES:</b>	Anodized, PVDF Paint, Anti-Microbial (Touch Points or All)
<b>HARDWARE OPTIONS:</b>	Single/Multi-Point Locking
<b>LISTINGS:</b>	None
<b>RATINGS:</b>	None
<b>CODES AND STANDARDS:</b>	Egress Provisions: NFPA 101



**ELEVATION VIEW**  
SCALE: 3/8" = 1'-0"

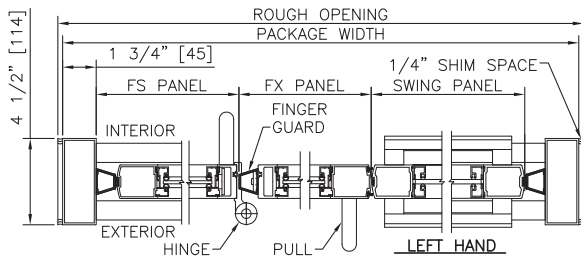


**PLAN VIEW**  
SCALE: 3/8" = 1'-0"

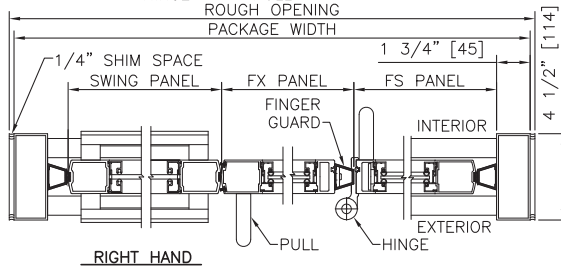


**LEFT HAND & RIGHT HAND**

**VERTICAL SECTION**  
SCALE: 2" = 1'-0"



**HORIZONTAL SECTION**  
SCALE: 2" = 1'-0"



- NOTES**
1. PACKAGE SHALL BE GROUNDED TO BUILDING GROUND SYSTEM. GROUNDING WIRE BY ELECTRICAL CONTRACTOR.
  2. ROUGH OPENING SHALL PROVIDE 1/4"[6] SHIM SPACE ON SIDES AND TOP OF PACKAGE.
  3. STANDARD PACKAGE HEIGHT SHOWN, PACKAGE HEIGHTS TO 96"[2438] AVAILABLE.
  4. STANDARD PACKAGE EXCLUDES LOCKING; 1-POINT LOCKING AVAILABLE.
  5. FOLD-IN PACKAGE SHOWN; FOLD-OUT AVAILABLE.
  6. GLAZING STOPS FOR ALL PANELS ARE 1/4"[6].
  7. STANDARD BOTTOM RAILS ARE SHOWN; BOTTOM RAILS TO 12"[305], AND MUNTINS 2"[51] AND 4 1/4"[108] AVAILABLE.

TYPICAL PACKAGE DIMENSIONS		
PACKAGE WIDTH	NOMINAL CLEAR DOOR OPENING	SWING DOOR PANEL OPTIONS
84"	63.8"	36", 42", 48"
96"	75.8"	36", 42", 48"
108"	87.8"	42", 48"
120"	99.8"	48"

**7600 FORMULAS**  
CLEAR DOOR OPENING = PACKAGE WIDTH - 20.3"

[CLICK HERE TO DOWNLOAD DRAWINGS, BIM AND SPECIFICATIONS](#)