

ACHIEVE YOUR ECO-FRIENDLY AND ENERGY SAVING GOALS

DURA-GLIDE GREENSTAR™ 2000/3000

The average commercial building wastes 30% of the energy it consumes, causing customers and employees discomfort and eroding a companies bottom line with excessive heating and cooling costs. Until now...

Born from the Dura-Glide, North America's number one selling automatic sliding door, comes our most energy efficient door: newly designed to help you achieve your eco-friendly and energy saving goals:

- **Improve air quality, occupant health and comfort by decreasing air infiltration by over 60%***
- **Increase thermal performance**
- **Improve building energy efficiency, saving on average \$514** door/year**

[Watch the video.](#)

During night hours when the building is closed



Improve thermal performance with insulated glass

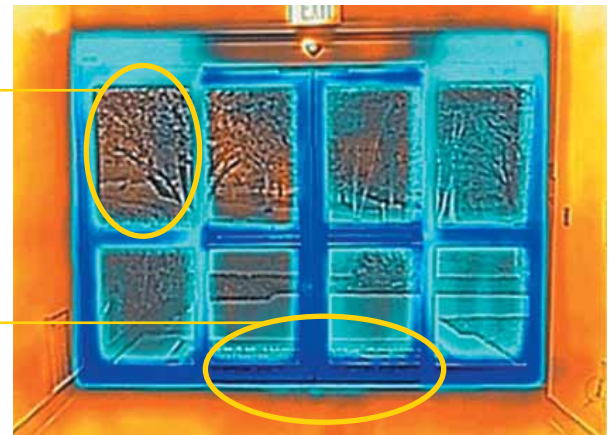
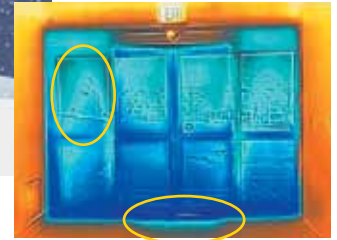
Specify based on your unique U-Factor requirements to minimize interior heat from conducting to the outside. [Watch the video.](#)

Decrease air infiltration by over 60%, saving on average \$227

per door/year in heating and cooling costs with the GreenFit Sealing System. Meets ASTM E283. [Learn about air infiltration codes and testing.](#)



BEFORE
Dura-Glide with 1/4" Glass



AFTER 1" Glass, GreenFit Sealing System



Improve air quality, occupant comfort, and building energy efficiency when the door is open

Ability to reduce the opening width, saving on average \$215 per door/year¹ in heating and cooling costs when there is low traffic or inclement weather.

Save on average \$72 in heating and cooling costs by shaving off an average of 1 second of open time² with Fast Tracking Enabled.

Block 80% of air coming into or escaping the building³ when the door is open by tying into a third party air curtain system.

ADDITIONAL VALUE OPTIONS

Self-fixing capabilities with the Green-Set-Go Package. This optional feature uses a panel closer and magnetic latch to return and reset the panels back on track after accidental breakout; maintaining operation and potentially avoiding a service call. [Watch the video.](#)

Estimates for U-Factor, Solar Heat Gain Coefficient and Visual Light Transmission ratings based on package configuration and glass.

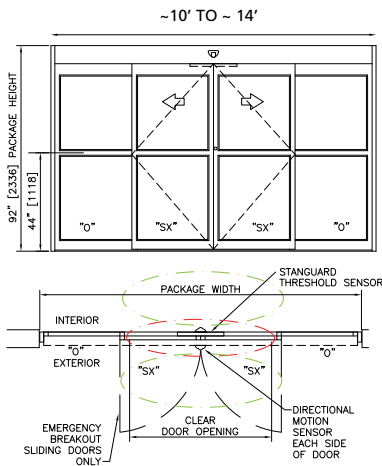


Cut out shown for demonstration

1: Reducing 6' opening to 4' on typical 14" bi-part for 90 days summer and 90 days winter, 1500 cycles/day.
2: typical 14' bi-part, 90 days winter at 30 degrees, 90 days summer at 88 degrees, 1500 cycles/day. Typical walking speed. ANSI/BHMA A156.10 compliant.
3: ASHRAE Room Air Distribution Equipment 17.9

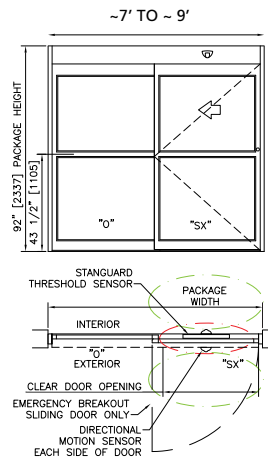
2000 BI-PART

Only SX Sliding Panels Break Out



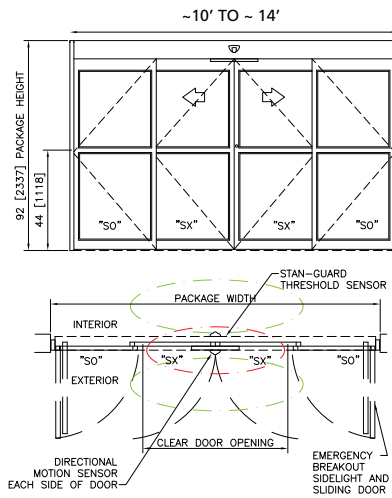
2000 SINGLE SLIDE

Only SX Sliding Panel Breaks Out



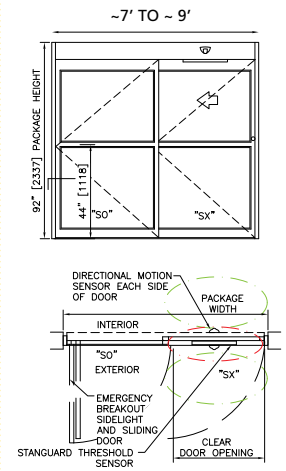
3000 BI-PART

All Panels Break Out



3000 SINGLE SLIDE

All Panels Break Out



SPECIFICATIONS

OPTIONS

DESIGN	Single Slide or Bi-part	
BREAKOUT	SX Panel on the 2000, SX and SO panels on the 3000	
TYPICAL HEIGHT	7'-8" (2.3m), Clear Door Opening of 6'-11" (2.1m)	Taller options available
HEADER SIZE	8" (203mm) High x 6" (152mm) Deep	
JAMB DIMENSION	1 3/4" x 4 1/2"	1 3/4" x 6"
STILES	Narrow 2"	Medium 3 1/2"
TYPICAL DOOR PANEL WEIGHT	Up to 220 Pounds Each (100kg)	Heavier options available. Contact your Local Sales Representative
DOOR PANEL MATERIALS	Aluminum	
POWER REQUIRED	120 VAC, 50/60 HZ, 5 Amps Minimum	
DRIVE SYSTEM	1/4 HP DC Motor, Gear Drive, Toothed belt	Twin 1/4 HP DCMotors
CONTROLS	Rocker Switch (with Reduced Open)	Rotary, Keyed Rotary Controls, Eco Pro (all include Reduced Open)
CONTROLLER	Microprocessor Based, Safety Logic	
ACTIVATION SENSORS	2 SU-100 Motion (Fast Tracking Enabled)	Activation sensors, Mats, Wallplates, Radio Control
SAFETY SENSORS	1 Stan-Guard® and 2 Doorway Holding Beams	Combination sensors and mats
TEMPERATURE RATING	-30F to 130F	
GLASS	1"	1/4", 1/2", 5/8"
GREENFIT SEALING SYSTEM	Default For Air Infiltration: Dual Extended Concealed Sweeps, Additional Sweep Gap Fillers and Air Infiltration Blocks	
MUNTIN	One 2" muntin	None, 4 1/4", Multiple
BOTTOM RAILS	4"	6", 8", 10", 12"
THRESHOLD	Configurable Options (Continuous Required for GreenFit Sealing System)	
TRANSOM	Configurable Verticals and/or Horizontals	
SPEED RANGE	Closing: 0.5' -1.5 per sec per ANSI. Opening: 0.5' -2.5' per sec.	
CODES AND STANDARDS	UL, cUL, ANSI/BHMA A156.10, IBC, UBC, BOCA, ICBO, NFPA 101, ASTM E283 (NFRC 400)	

CONTACT YOUR LOCAL SALES REPRESENTATIVE | VISIT STANLEYACCESS.COM/DG-GREENSTAR