

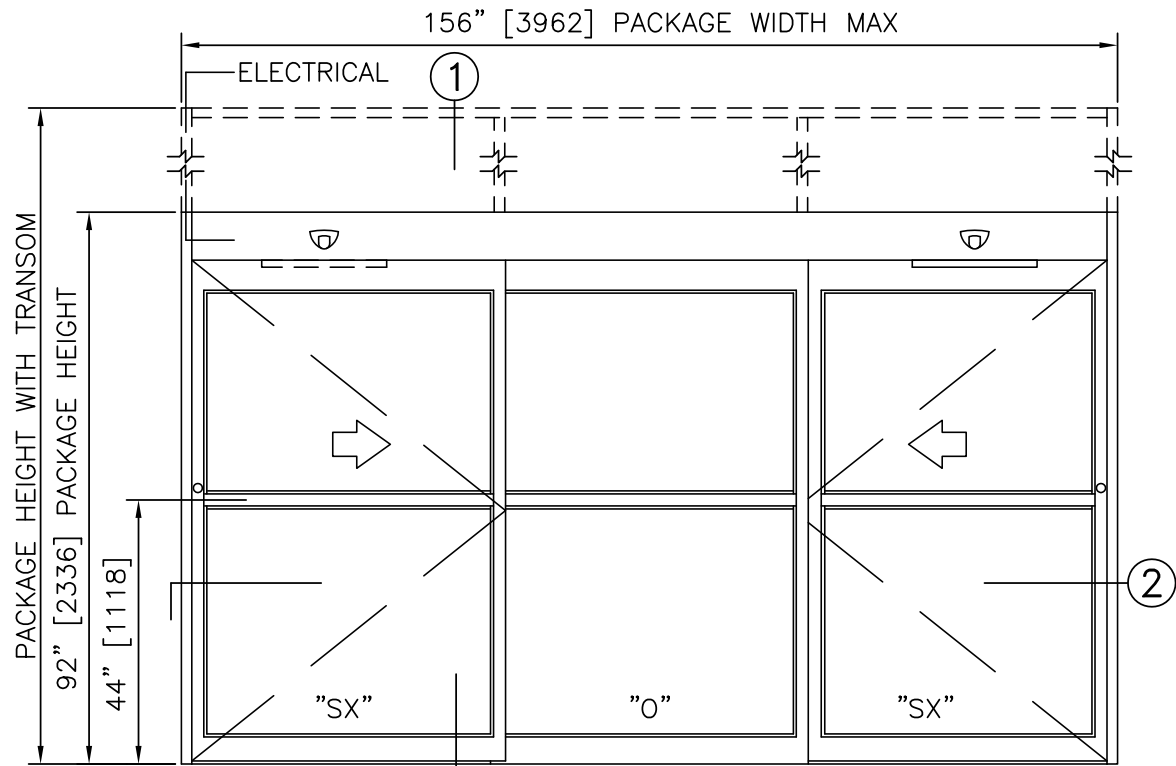


# BYPASS

BYPASS RIGHT HAND ENTRY, WITH OPTIONAL TRANSOM

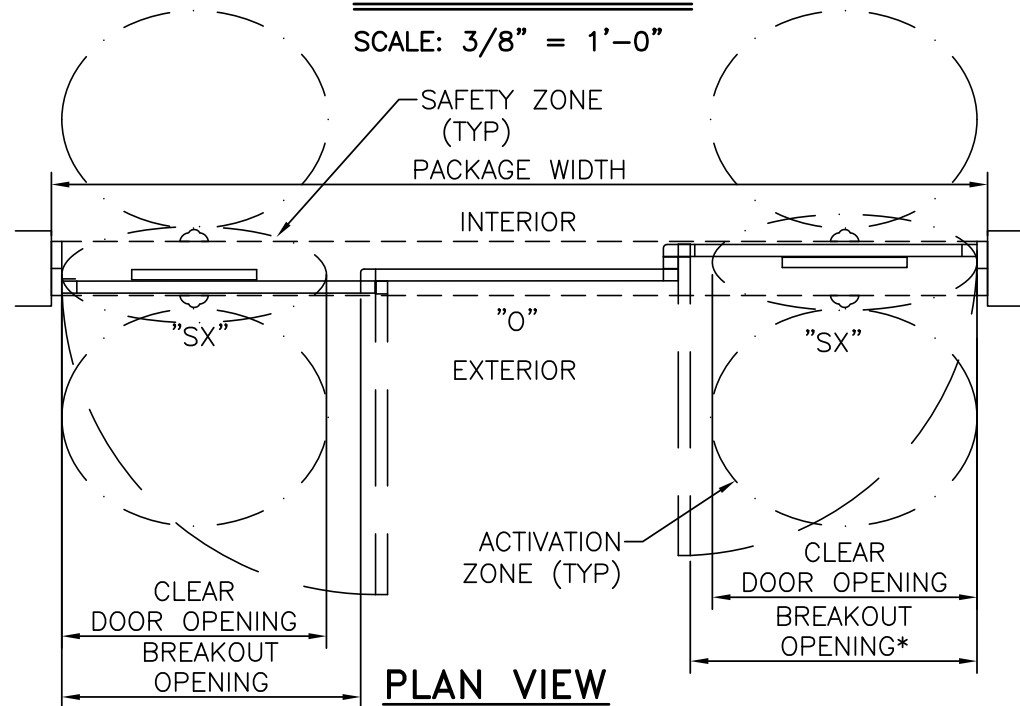
PROJECT INFORMATION

PROJECT NAME: \_\_\_\_\_  
 LOCATION: \_\_\_\_\_  
 DOOR NUMBER(S): \_\_\_\_\_  
 DATE: \_\_\_\_\_ SHEET: OF \_\_\_\_\_



**ELEVATION VIEW**

SCALE: 3/8" = 1'-0"

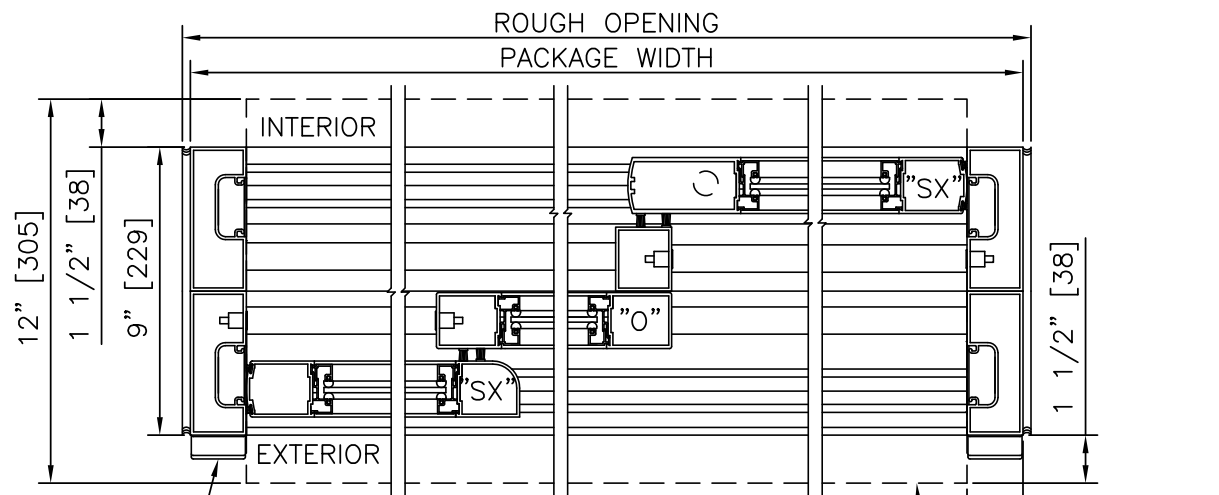


**PLAN VIEW**

SCALE: 3/8" = 1'-0"

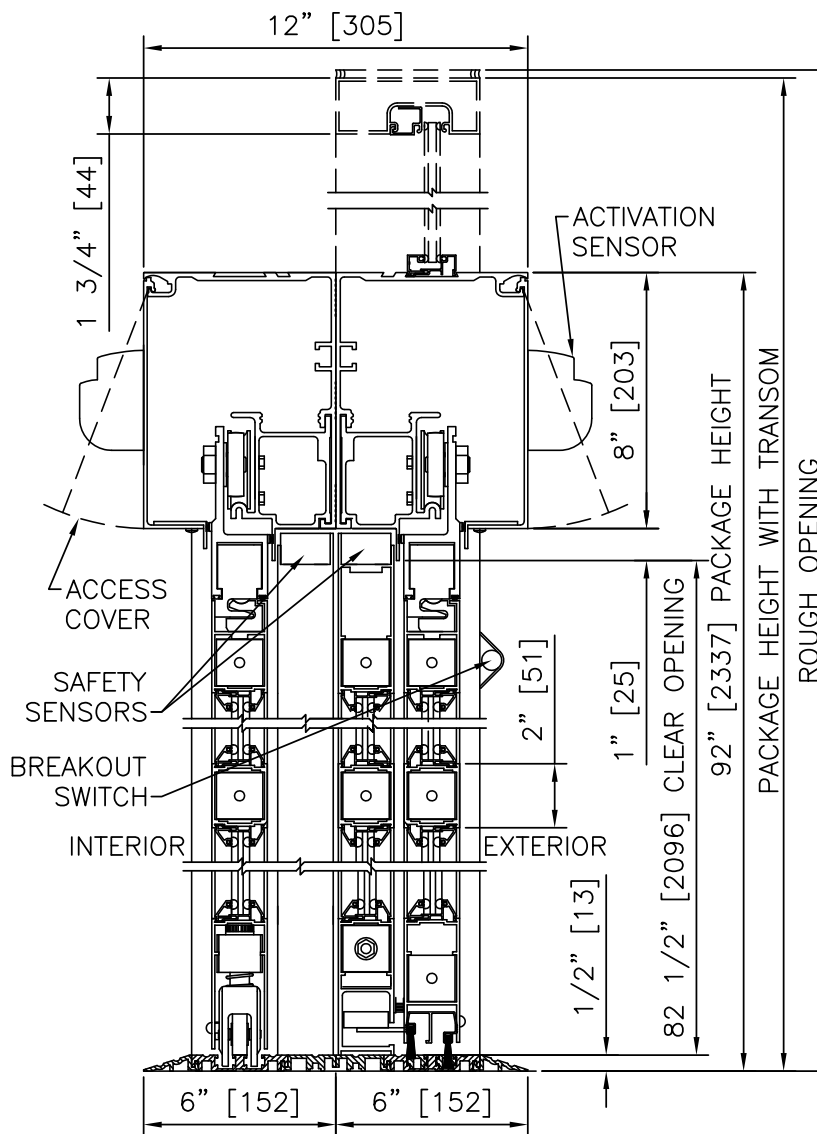
**NOTES**

- ELECTRICAL REQUIREMENTS: 120 VAC, 5 AMP MIN TO POWER OPERATOR BY ELECTRICAL CONTRACTOR.
- ROUGH OPENING SHALL PROVIDE 1/4"[6] SHIM SPACE ON SIDES AND TOP OF PACKAGE.
- LIMITS OF ACTIVATION AND SAFETY ZONES ARE FOR REFERENCE ONLY; SEE ANSI/BHMA A156.10 FOR DETAILED REQUIREMENTS.
- STANDARD LOCKING IS 1-POINT, 2-POINT AND, 3-POINT SYSTEMS AVAILABLE.
- STANDARD GLAZING STOPS FOR ALL PANELS ARE 1/4"[6]; 5/8"[16] AND 1"[25] AVAILABLE,
- STANDARD STILES, BOTTOM RAILS AND MUNTINS SHOWN; MEDIUM STILES, BOTTOM RAILS TO 12"[305], AND 4 1/4"[108] MUNTINS AVAILABLE.
- SEE SPECIFICATIONS FOR ADDITIONAL INFORMATION.



**HORIZONTAL SECTION**

SCALE: 2" = 1'-0"



**VERTICAL SECTION**

SCALE: 2" = 1'-0"

- TRANSOM**
- YES
  - VERTICALS 1 2 3
- FINISH**
- ANODIZED CLEAR CL2
  - ANODIZED DK BRONZE
  - CUSTOM
- LOCKING**
- 1-POINT
  - 2-POINT
  - 3-POINT
- STILES**
- NARROW
  - MEDIUM
- BOTTOM RAILS**
- STANDARD 4"
  - OPTIONAL 6" 8" 10" 12"
- THRESHOLDS**
- SQ/BVL (EXT)
  - SQ/BVL (INT)
  - DBL BVL
  - RECESSED
- ACTIVATION/SAFETY**
- 2 SU-100/STANGUARD (STD)
- OTHER OPTIONS**
- ROTARY CTRL SWITCH
  - UNINTERRUPTIBLE POWER SUPPLY
  - FLY OPEN BOX

TYPICAL PACKAGE DIMENSIONS (NARROW STILE)						
PACKAGE WIDTH	ENTRANCE NOMINAL CLEAR DOOR OPENING	EXIT NOMINAL CLEAR DOOR OPENING	ENTRANCE DOOR PANEL NOMINAL WIDTH	EXIT & O-PANEL NOMINAL WIDTH	ENTRANCE EMERGENCY BREAKOUT NOMINAL WIDTH*	EXIT EMERGENCY BREAKOUT NOMINAL WIDTH
120"	36.0"	33.5"	41.1"	39.6"	37.5"	37.0"
144"	44.0"	41.5"	49.1"	47.6"	45.5"	45.0"
156"	48.0"	45.5"	53.1"	51.6"	49.5"	49.0"

\* WIDTH WHEN PANEL IS BROKEN OUT FROM THE FULLY CLOSED POSITION.

**BYPASS FORMULAS**

- ENTRANCE CLEAR DOOR OPENING = 1/3 PACKAGE WIDTH - 4.0"
- EXIT CLEAR DOOR OPENING = 1/3 PACKAGE WIDTH - 6.5"
- ENTRANCE EMERGENCY BREAKOUT WIDTH = ENTRANCE CDO + 1.5"
- EXIT EMERGENCY BREAKOUT WIDTH = EXIT CDO + 3.5"
- ENTRANCE DOOR PANEL WIDTH = 1/3 PACKAGE WIDTH + 1.1"
- EXIT DOOR/O-PANEL WIDTH = 1/3 PACKAGE WIDTH - 0.4"

BYPASS RIGHT HAND ENTRY, WITH OPTIONAL TRANSOM

**BYPASS**



ACCESS TECHNOLOGIES



# BYPASS

BYPASS LEFT HAND ENTRY, WITH OPTIONAL TRANSOM

PROJECT INFORMATION

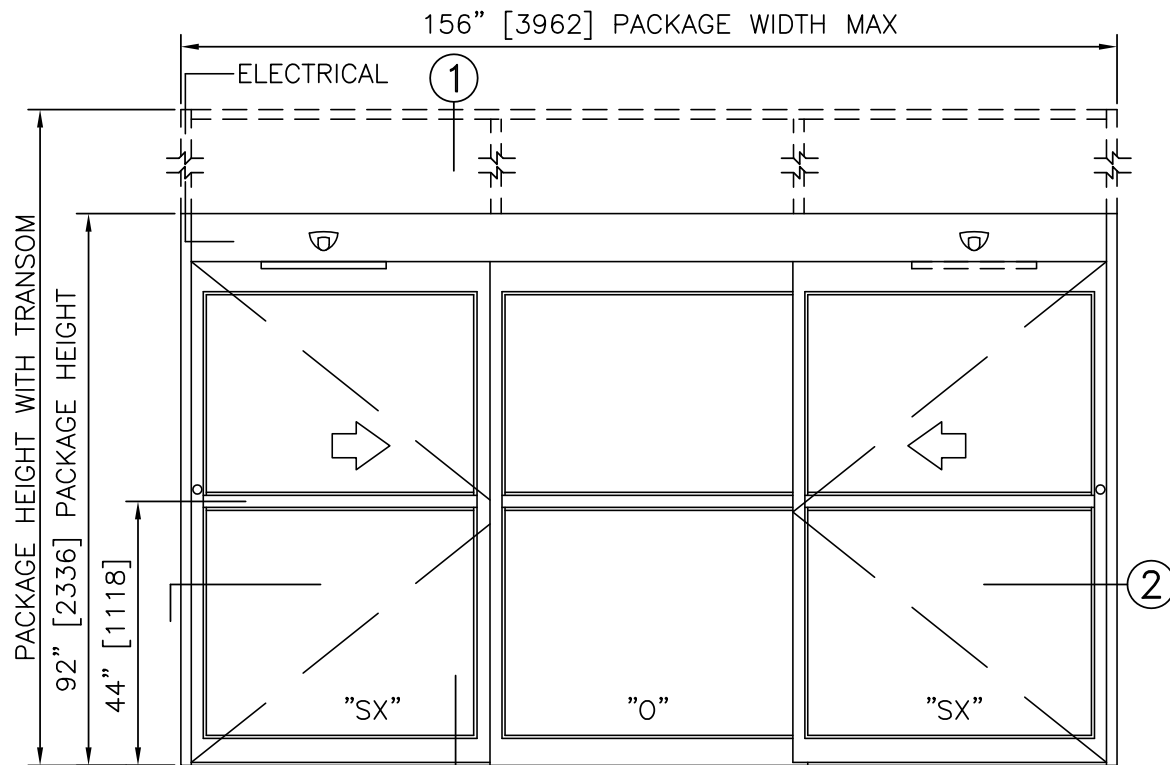
PROJECT NAME:

LOCATION:

DOOR NUMBER(S):

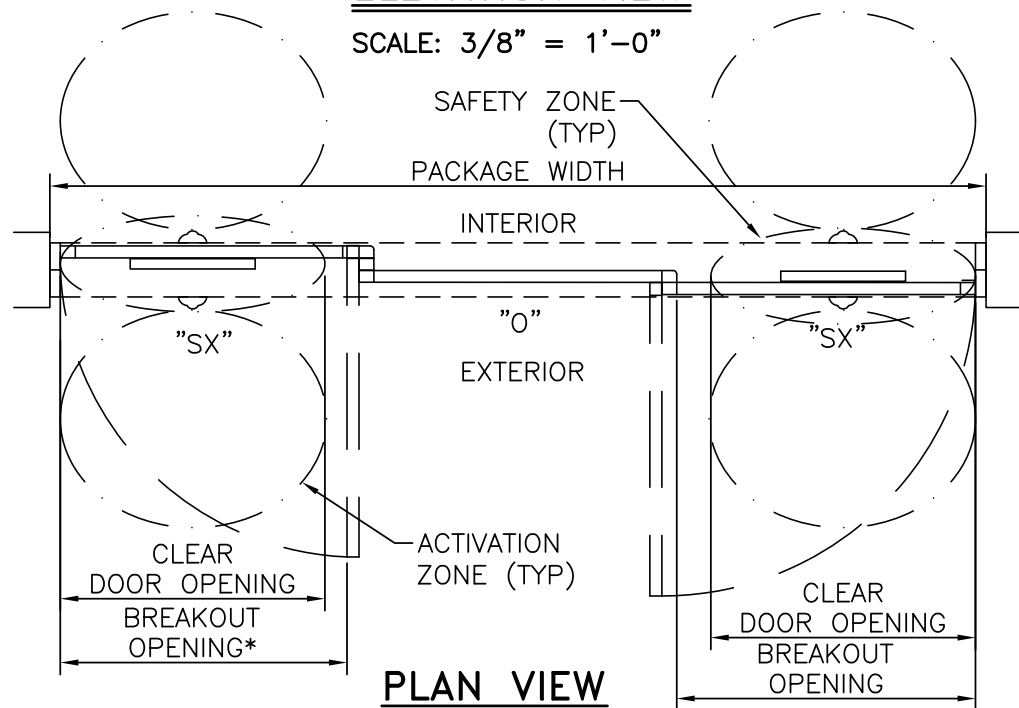
DATE:

SHEET: OF



### ELEVATION VIEW

SCALE: 3/8" = 1'-0"

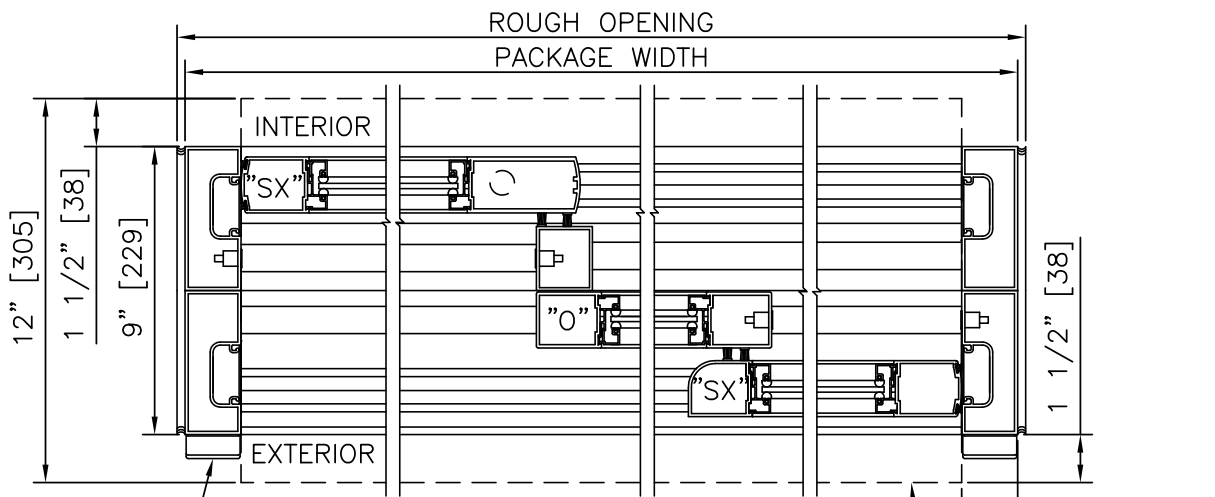


### PLAN VIEW

SCALE: 3/8" = 1'-0"

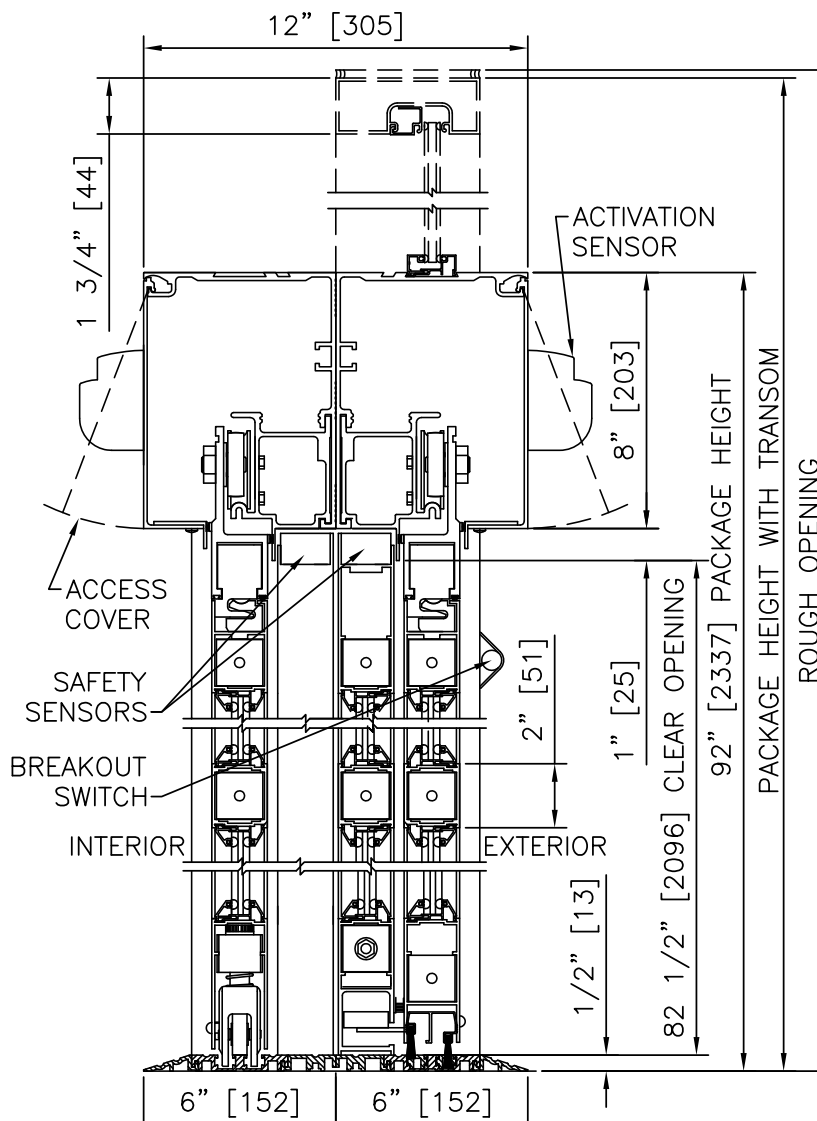
#### NOTES

1. ELECTRICAL REQUIREMENTS: 120 VAC, 5 AMP MIN TO POWER OPERATOR BY ELECTRICAL CONTRACTOR.
2. ROUGH OPENING SHALL PROVIDE 1/4"[6] SHIM SPACE ON SIDES AND TOP OF PACKAGE.
3. LIMITS OF ACTIVATION AND SAFETY ZONES ARE FOR REFERENCE ONLY; SEE ANSI/BHMA A156.10 FOR DETAILED REQUIREMENTS.
4. STANDARD LOCKING IS 1-POINT, 2-POINT AND, 3-POINT SYSTEMS AVAILABLE.
5. STANDARD GLAZING STOPS FOR ALL PANELS ARE 1/4"[6]; 5/8"[16] AND 1"[25] AVAILABLE,
6. STANDARD STILES, BOTTOM RAILS AND MUNTINS SHOWN; MEDIUM STILES, BOTTOM RAILS TO 12"[305], AND 4 1/4"[108] MUNTINS AVAILABLE.
7. SEE SPECIFICATIONS FOR ADDITIONAL INFORMATION.



### ② HORIZONTAL SECTION

SCALE: 2" = 1'-0"



### ① VERTICAL SECTION

SCALE: 2" = 1'-0"

- TRANSOM
  - YES
  - VERTICALS 1 2 3
- FINISH
  - ANODIZED CLEAR CL2
  - ANODIZED DK BRONZE
  - CUSTOM
- LOCKING
  - 1-POINT
  - 2-POINT
  - 3-POINT
- STILES
  - NARROW
  - MEDIUM
- BOTTOM RAILS
  - STANDARD 4"
  - OPTIONAL 6" 8" 10" 12"
- THRESHOLDS
  - SQ/BVL (EXT)
  - SQ/BVL (INT)
  - DBL BVL
  - RECESSED
- ACTIVATION/SAFETY
  - 2 SU-100/STANGUARD (STD)
- OTHER OPTIONS
  - ROTARY CTRL SWITCH
  - KEYED
  - UNINTERRUPTIBLE POWER SUPPLY
  - FLY OPEN BOX

TYPICAL PACKAGE DIMENSIONS (NARROW STILE)						
PACKAGE WIDTH	ENTRANCE NOMINAL CLEAR DOOR OPENING	EXIT NOMINAL CLEAR DOOR OPENING	ENTRANCE DOOR PANEL NOMINAL WIDTH	EXIT & O-PANEL NOMINAL WIDTH	ENTRANCE EMERGENCY BREAKOUT NOMINAL WIDTH*	EXIT EMERGENCY BREAKOUT NOMINAL WIDTH
120"	36.0"	33.5"	41.1"	39.6"	37.5"	37.0"
144"	44.0"	41.5"	49.1"	47.6"	45.5"	45.0"
156"	48.0"	45.5"	53.1"	51.6"	49.5"	49.0"

\* WIDTH WHEN PANEL IS BROKEN OUT FROM THE FULLY CLOSED POSITION.

#### BYPASS FORMULAS

- ENTRANCE CLEAR DOOR OPENING = 1/3 PACKAGE WIDTH - 4.0"
- EXIT CLEAR DOOR OPENING = 1/3 PACKAGE WIDTH - 6.5"
- ENTRANCE EMERGENCY BREAKOUT WIDTH = ENTRANCE CDO + 1.5"
- EXIT EMERGENCY BREAKOUT WIDTH = EXIT CDO + 3.5"
- ENTRANCE DOOR PANEL WIDTH = 1/3 PACKAGE WIDTH + 1.1"
- EXIT DOOR/O-PANEL WIDTH = 1/3 PACKAGE WIDTH - 0.4"

BYPASS LEFT HAND ENTRY, WITH OPTIONAL TRANSOM

# BYPASS



ACCESS TECHNOLOGIES